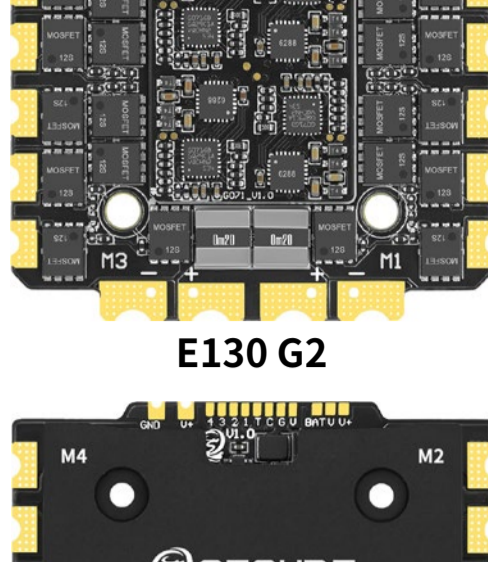


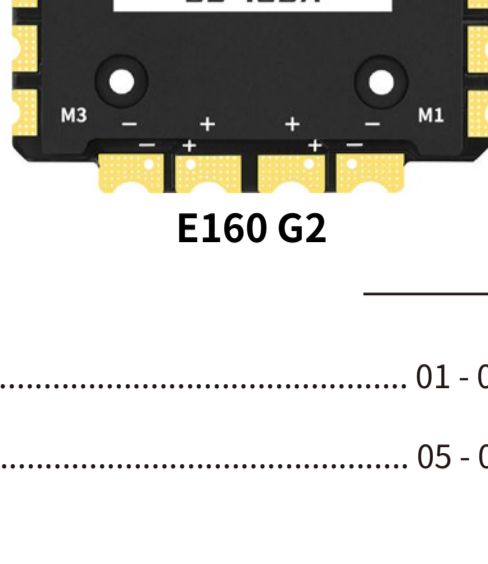
# SEQUIRE E130 G2 & E160 G2 4-in-1 ESC

感谢您购买本产品!请您在使用前仔细阅读说明书,严格遵守规定的操作说明,使用者需具备一定电子基础和良好的焊接技术,错误的使用可能造成人身伤害和设备损坏。我们不承担因使用本产品或擅自对产品进行改造而引起的任何责任,包括但不限于对附带损失或间接损失的赔偿责任。

Thanks for buying this product! Please read the instructions carefully before use and strictly abide by the specified operating instructions. Users must have a certain electronic foundation and good welding skills. Wrong use may cause personal injury and equipment damage. We do not assume any liability arising from the use of this product or unauthorized modifications to the product, including but not limited to liability for incidental or indirect losses.



E130 G2



E160 G2

1. English instruction manual	01 - 04
2. 中文说明书	05 - 08



**Note: Once this product is activated and affects secondary sales, it is not eligible for a 7-day return without reason**

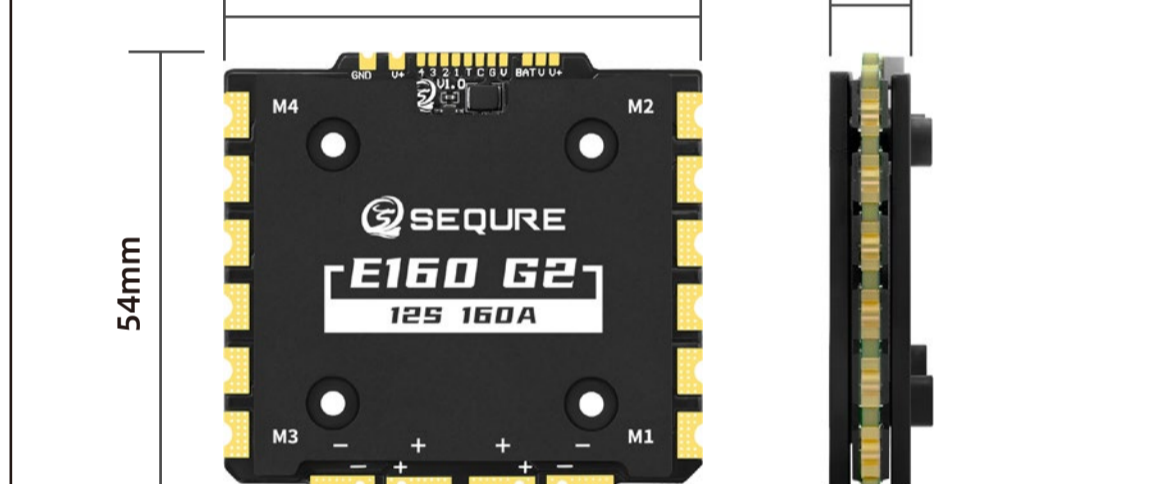
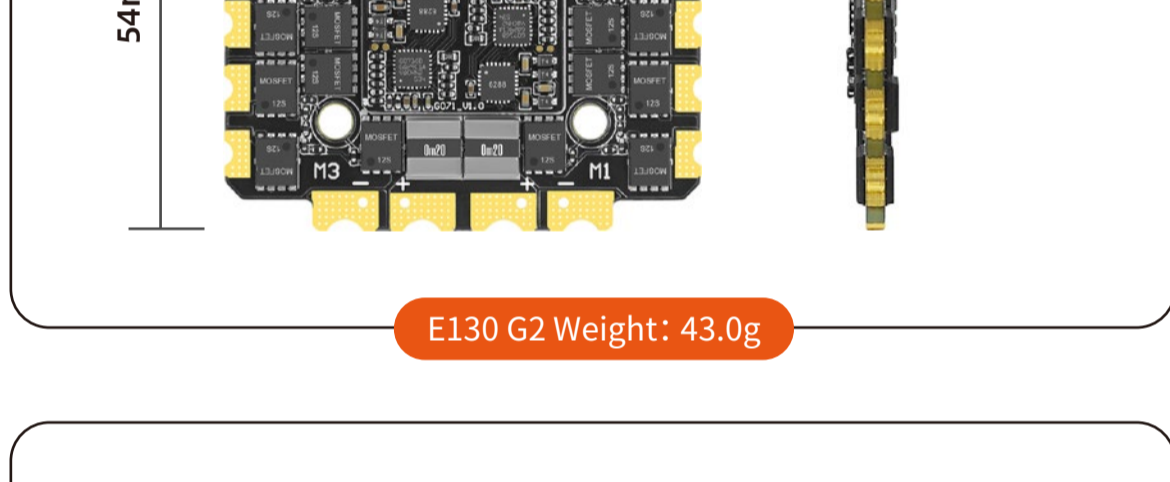
## 1 PRODUCT DESCRIPTION

- Adopting a 32-bit high-performance processor STM32G071, supporting AM32 | BLHeli\_32 firmware.
- Wide voltage 4-12S input, E130 G2 single channel current lasts for 130A (peak 220A), E160 G2 single channel current lasts for 160A (peak 280A).
- Adopting low internal resistance high-power MOSFET, ultra-high efficiency conversion, reducing losses, and extending flight time.
- Dual pad design for power supply, parallel connection of dual batteries for easier soldering and stronger overcurrent capability.
- Adopting high-quality multi-layer PCB with ultra-high copper thickness and board mounted copper strip design, it increases overcurrent capacity, improves heat dissipation performance, and is not afraid of load pressure.
- Accurate switch spacing, excellent circuit design, solves the problem of out of step. Accelerate the response speed of ESC, control smoothly, and have a delicate touch.
- Support real-time transmission of multiple data: built-in ammeter, support telemetry transmission, real-time update of motor speed, temperature, current and other data.
- The ESC automatically detects the throttle signal when powered on, supports all Dshot signals, and also supports signal protocols such as PWM, Oneshot, and Multishot.
- Visual programming parameter tuning tool, supporting settings such as motor angle, throttle calibration, current detection, motor steering, telemetry signals, etc.
- The installation hole spacing design is 30.5 \* 30.5mm, suitable for various types of racks, and the installation is pressure free.

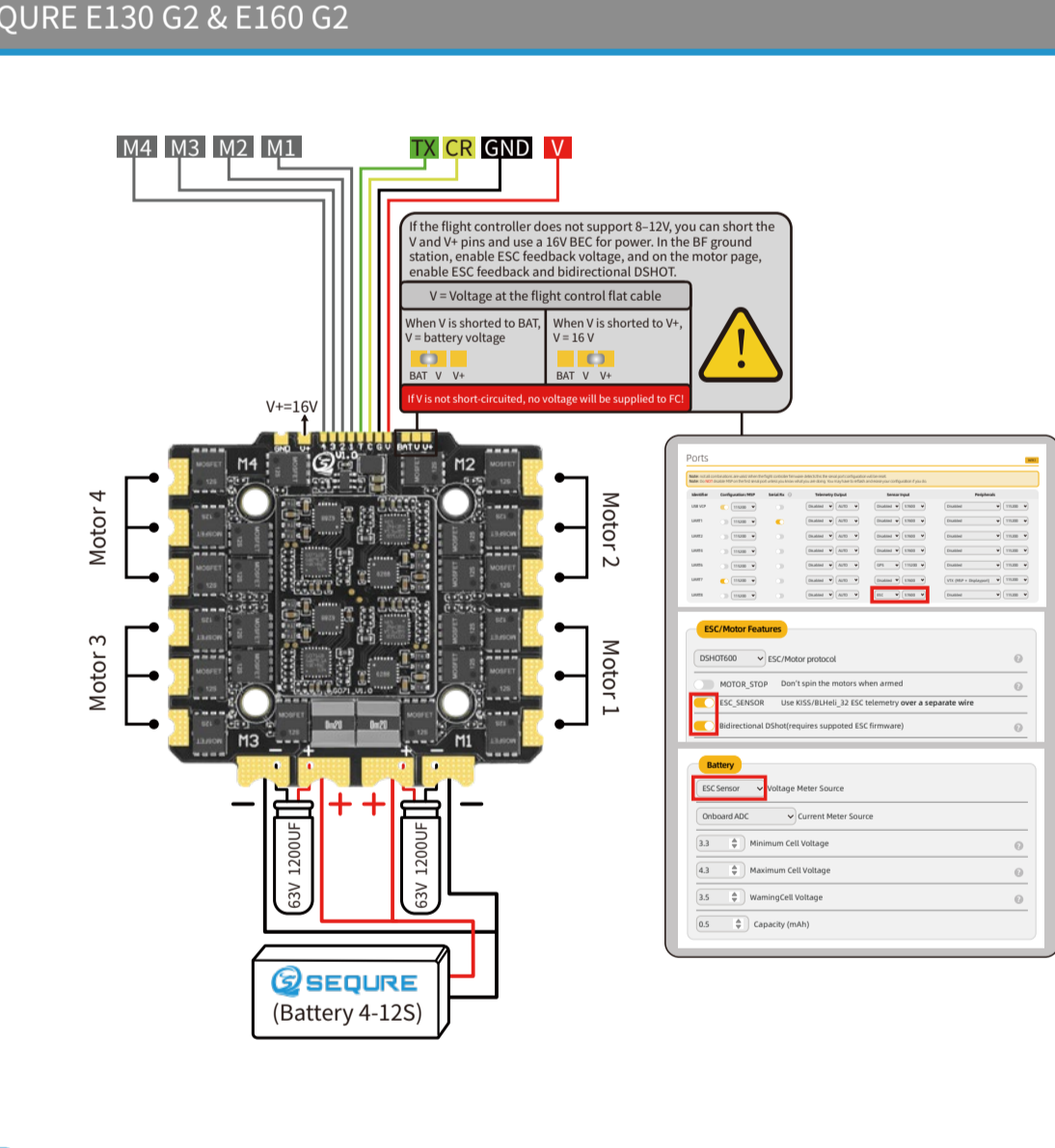
## 2 PRODUCT PARAMETERS

Model	E130 G2	E160 G2
Processor	STM32G071	
Working Voltage	4-8S (14-35.2V) Lipo / LiHV, 4-12S (14-53V) Lipo / LiHV	
Continuous Current	130A	160A
Peak Current	220A	280A
Firmware Version	AM32, BLHeli_32	
Support Protocol	Dshot(All), PWM, Oneshot, Multishot, etc.	
Telemetry Return	YES	
Galvanometer	YES	
BEC	16V 2A	
Mounting Hole Spacing	30.5*30.5mm, ø4mm/M3	
Product Size	54*57*7mm(L*W*H)	54*57*10mm(L*W*H)
Product Weight	43g	66g

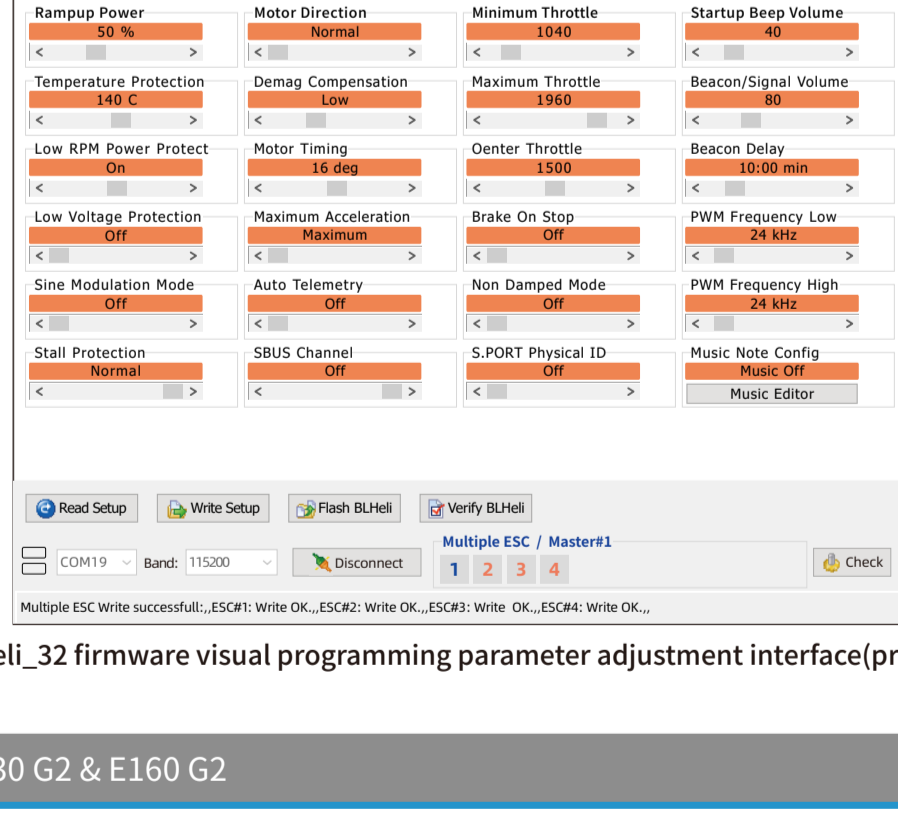
## 3 SIZE AND WEIGHT



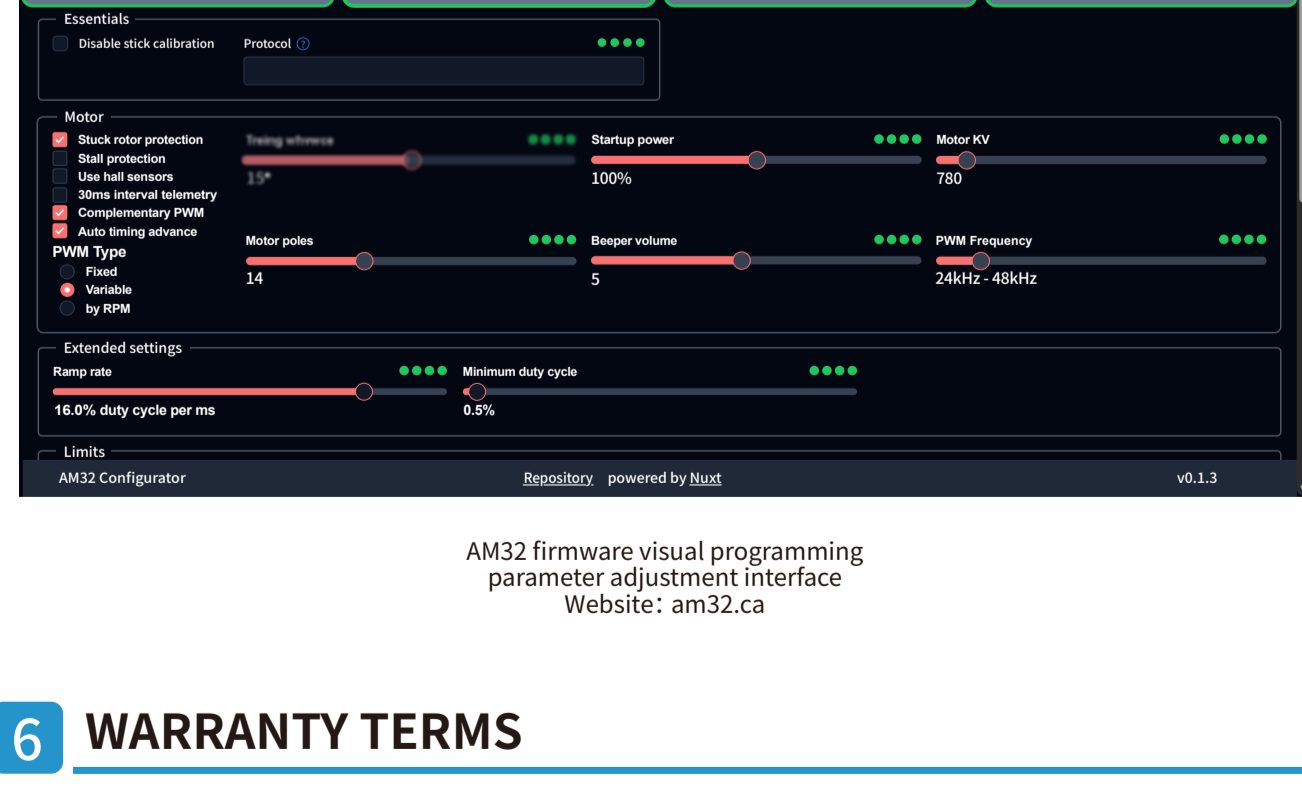
## 4 WIRING DIAGRAM



## 5 ESC SETTING



▶ BLHeli\_32 firmware visual programming parameter adjustment interface(pre-release)



AM32 firmware visual programming parameter adjustment interface  
Website: am32.ca

## 6 WARRANTY TERMS

1. For those performance faults caused by non-human factors within 3 months from the date of purchase, we provide repair & maintenance service for free. After 3 months, no labor fee will be charged for repairs. If you would like to replace parts, you must pay for the costs.
2. All man-made damage, faults caused by self disassembly & improper use, and all consumables like soldering tips are not covered by the warranty.

## 7 SAFETY PRECAUTIONS

- Please do not flash unofficial firmware to avoid damage to the ESC.
- Please do not use it beyond the ESC operating voltage and current range.
- Please check and make sure the positive and negative polarity are correct before powering on.
- Please use the product in compliance with local regulations and ensuring safety.
- Please use accessories that meet safety standards and store them out of reach of children.

## 1 产品描述

- 采用32位高性能处理器STM32G071，支持AM32|BLHeli\_32固件。
- 宽电压4-12S输入，E130 G2单路电流持续130A(峰值220A)，E160 G2单路电流持续160A(峰值280A)。
- 采用低内阻大功率MOSFET，超高的效率转换，降低损耗，延长飞行时间。
- 电源双焊盘设计，并联双电池，焊接更方便，过流能力更强。
- 采用超高铜厚优质多层PCB，板载铜条设计，增大过流能力，提升散热性能，无惧负载压力。
- 精准开关间隔，优异的电路设计，解决失步问题。加快电调的响应速度，控制流畅，手感细腻。
- 支持多种数据实时回传：内置电流计，支持遥测回传，实时更新电机转速，温度，电流等数据。
- 电调上电自动检测油门信号，支持全部Dshot信号，同时支持PWM，Oneshot和Multishot等信号协议。
- 可视化编程调参工具，支持电机进角，油门校准，电流检测，电机转向，遥测信号等设置。
- 30.5\*30.5mm安装孔距设计，适配多种类型机架，装机无压力。

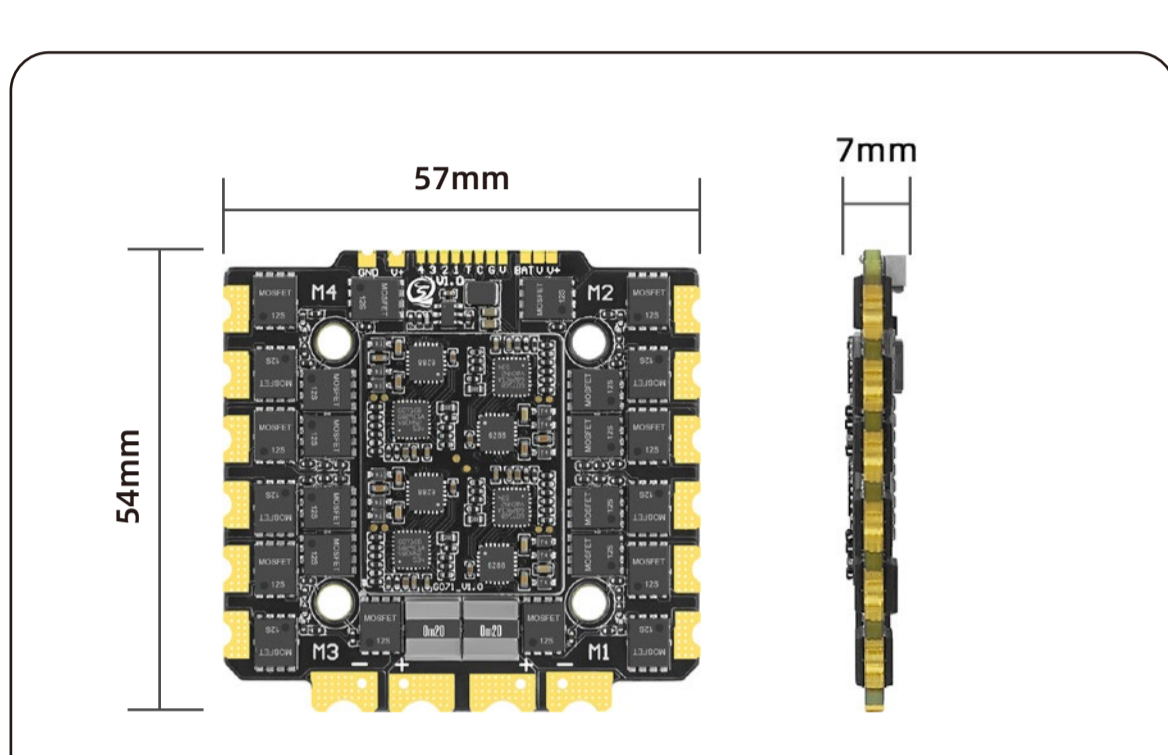
## 2 产品参数

型号名称	E130 G2	E160 G2
处理器	STM32G071	
工作电压	4-8S (14-35.2V) Lipo / LiHV , 4-12S (14-53V) Lipo / LiHV	
持续电流	130A	160A
峰值电流	220A	280A
支持固件	AM32, BLHeli_32	
支持协议	Dshot (全部) , PWM, Oneshot, Multishot等	
遥测回传	支持	
电流计	支持	
BEC	16V 2A	
安装孔距	30.5*30.5mm, $\varnothing$ 4mm/M3	
产品尺寸	54*57*7mm(L*W*H)	54*57*10mm(L*W*H)
产品重量	43g	66g

SEQUIRE E130 G2 & E160 G2

05

## 3 尺寸重量



E130 G2重量: 43.0g

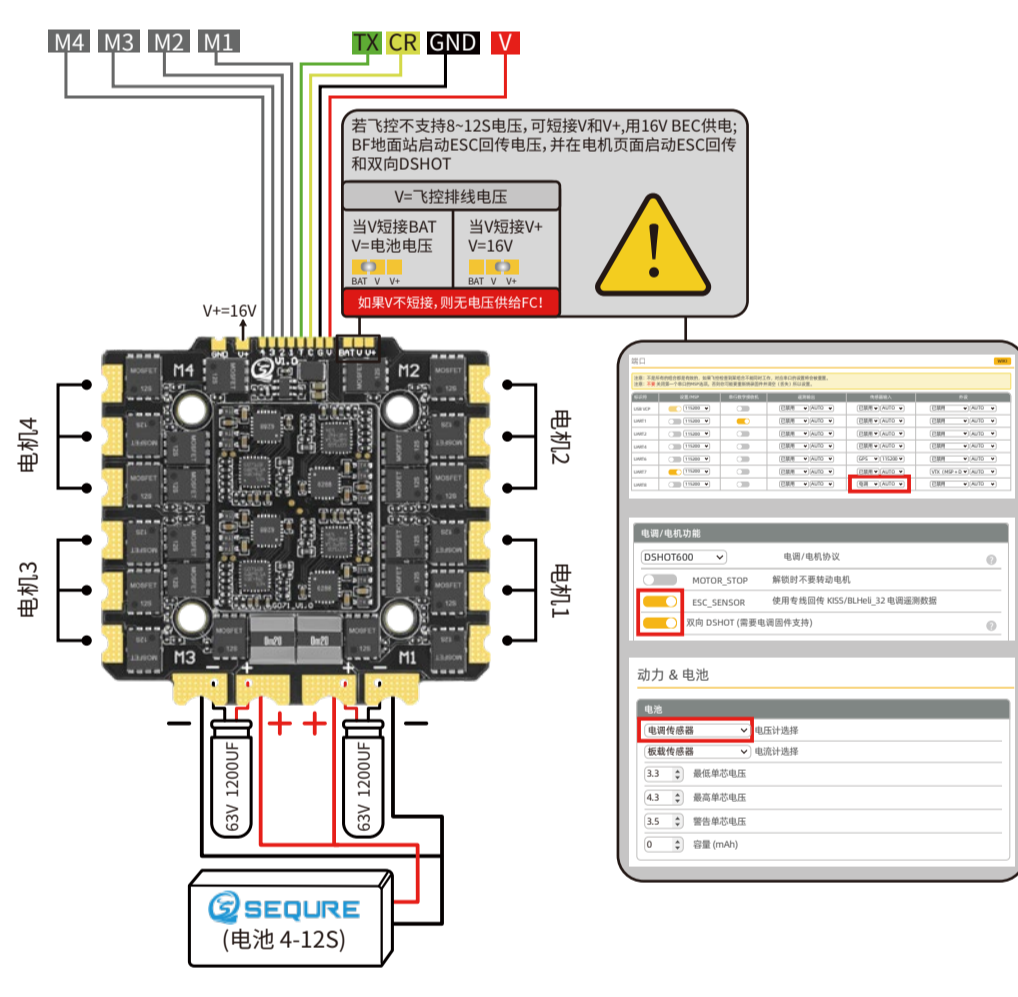


E160 G2重量: 66.0g

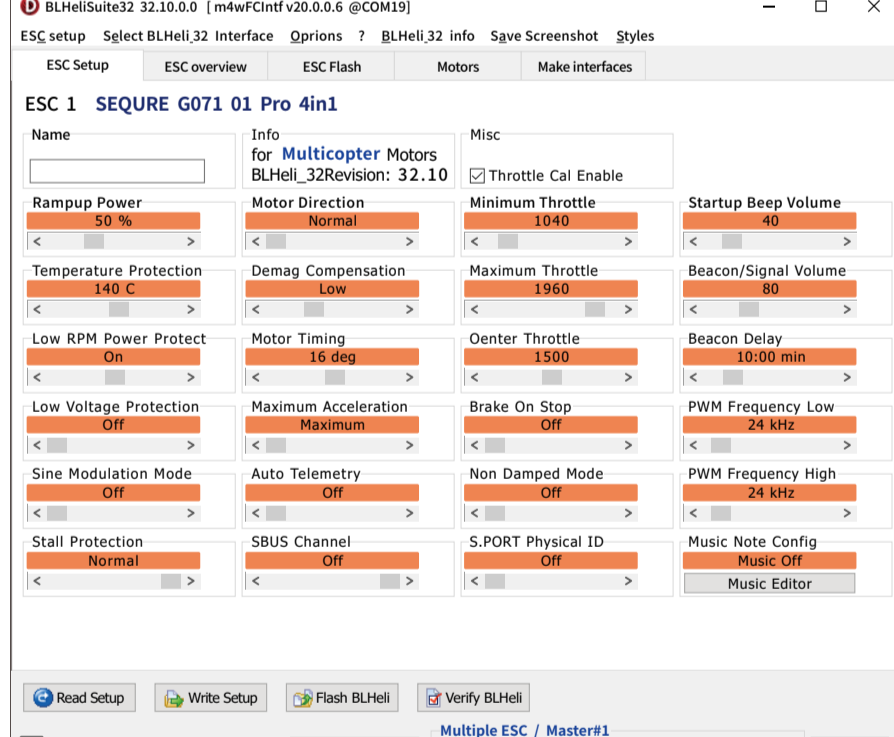
## 4 接线图

SEQUIRE E130 G2 & E160 G2

06



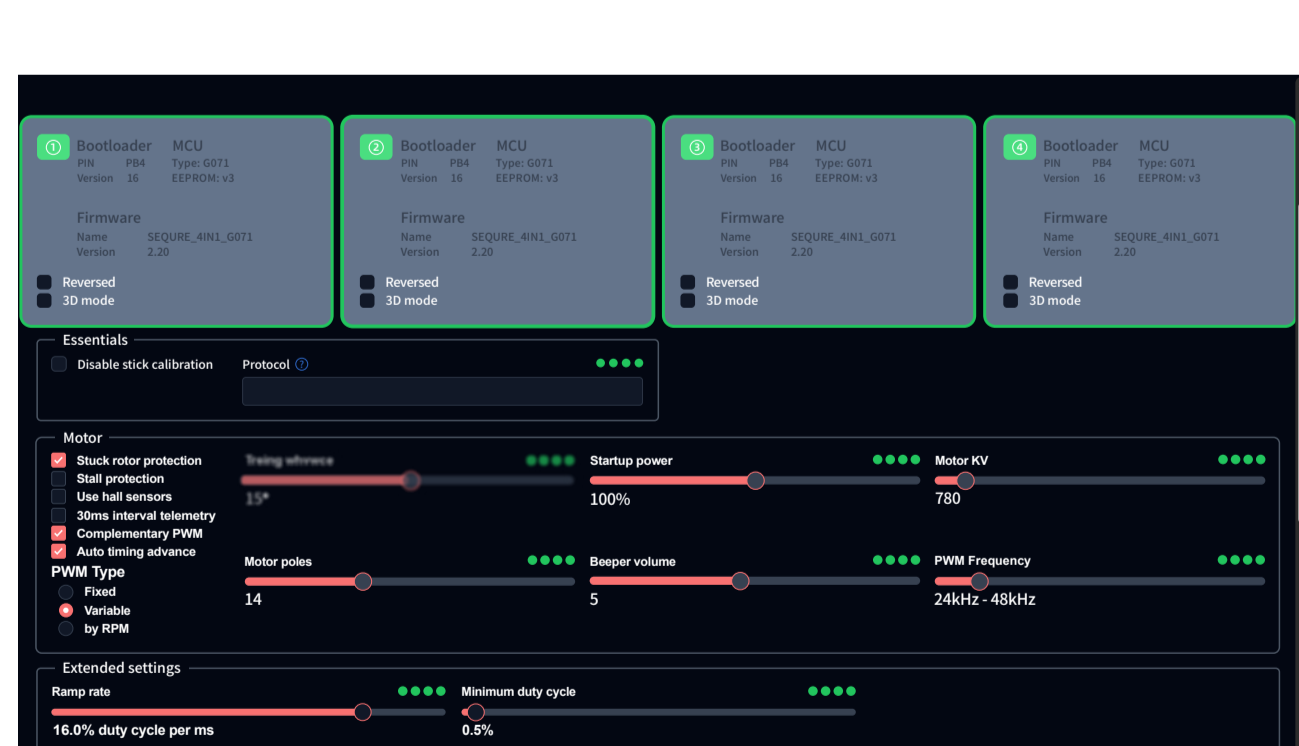
## 5 电调参数



► BLHeli\_32固件可视化编程调参界面 (预发布版本)

SEQUIRE E130 G2 & E160 G2

07



AM32固件可视化编程调参界面

调参网址: am32.ca

## 6 保修条款

- (1)自购机之日起3个月内出现非人为因素造成的性能故障，厂家提供免费维修服务。3个月后，修理不收取人工费，若更换配件，费用需用户承担。
- (2)一切人为损坏，自行拆机，使用不当造成的故障，不在保修范围。

## 7 安全须知

- 请勿刷写非官方指定的固件，以免损坏电调。
- 请不要超过ESC工作电压，电流范围使用。
- 请供电前检查并确保正负极性无误，才能通电使用。
- 请在符合当地法规和确保安全情况下使用产品。
- 请使用符合安全标准的配件，存放在儿童不容易接触的地方。



www.sequiremall.com

info@sequiremall.com

0769-89399884

SEQUIRE E130 G2 & E160 G2

08