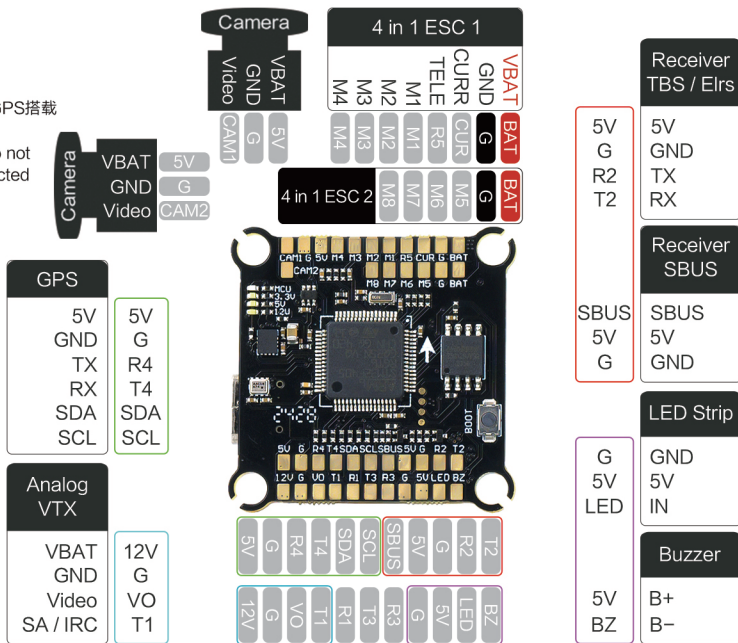


ARGUS ECO F405 60A STACK

*SCL和SDA仅在GPS搭载罗盘时连接。

*SCL and SDA do not need to be connected if GPS without magnetometer.



*焊接前请确认接口定义是否正确。

*Please confirm the interface definition and make sure it is correct before soldering.

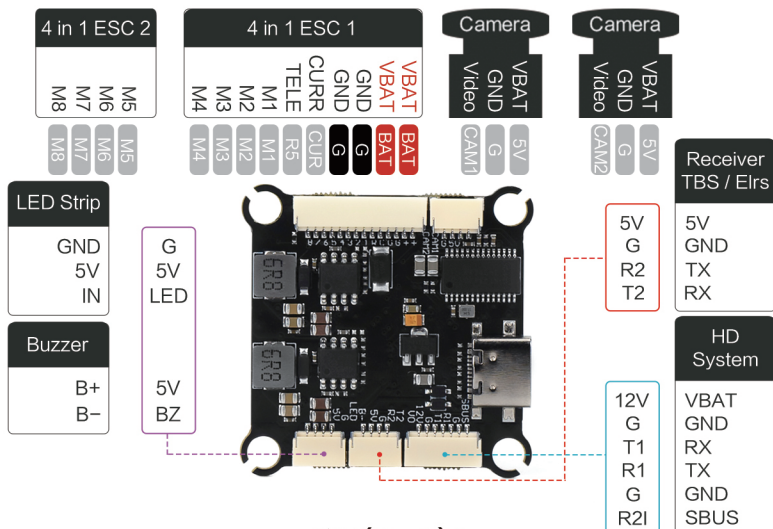
注意事项:

我们建议使用ELRS接收机，同时使用了DJI天空端时，某些ELRS接收机会出现无法正常被飞控识别的问题。如果出现此问题，则您需要将天空端排线的SBUS信号线与飞控断开连接。

Notes:

We recommend using ELRS receivers. When DJI Sky is used, some ELRS receivers may not be recognized by flight controllers. If this problem occurs, you need to disconnect the SBUS signal cable of the Sky Cable from the flight controller.

正面 (Front) ↑



- DJI O3 Air Unit
- DJI Air Unit
- Avatar HD
- Vista / Link

反面 (Back) ↑

*SBUS(R2)仅在使用DJI FPV遥控器时连接。
*Please disconnect the SBUS (R2) if you are NOT using the DJI FPV Controller.

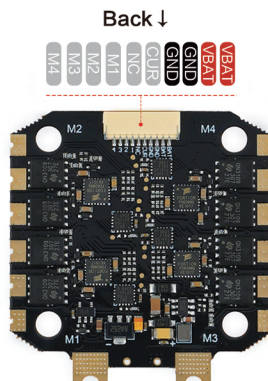
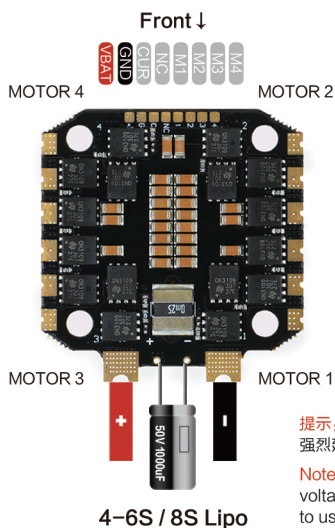
ARGUS ECO F405 60A STACK

Argus ECO 60A 电调

固件名称	Bluejay_QH30 (default)
电流比例值	200
输入电压	4~6S / 8S Lipo
持续电流	60A
瞬时电流	70A
温度保护	支持
电调遥测	不支持
BEC	不支持
尺寸	44.8*43*6mm
安装孔距	30.5*30.5mm
重量	13.5g

Argus ECO 60A ESC

固件名称	Bluejay_QH30 (default)
Amperage Meter	200
Input Voltage	4~6S / 8S Lipo
Continuous current	60A
Burst current	70A
Temperature protection	Supported
Telemetry	Not supported
BEC	Not supported
Size	44.8*43*6mm
Install hole distance	30.5*30.5mm
Weight	13.5g



提示：为了保护电调在通电时不被瞬间电压尖峰烧坏，强烈建议使用包装内的电容。

Note: To protect the ESC from being burnt out by transient voltage spikes when powered on, it is strongly recommended to use the capacitor in the package.

ECO F405 飞控

固件名称	SPDX-SPEEDIX F405(Betaflight)
MCU	STM32F405RGT6
陀螺仪	ICM42688P
BEC	5V3A / 12V2A
串口	5个
OSD	支持
黑匣子	16M
气压计	支持
输入电压	4~8S
尺寸	36*36*6mm
安装孔距	30.5*30.5mm
重量	7g

ECO F405 FC

固件名称	SPDX-SPEEDIX F405(Betaflight)
MCU	STM32F405RGT6
Gyro	ICM42688P
BEC	5V3A / 12V2A
Uarts	5 Set
OSD	Supported
Black box	16M
Barometer	supported
Input voltage	4~8S
Size	36*36*6mm
Install hole distance	30.5*30.5mm
Weight	7g



更多详情请访问: www.axisflying.com

For more details please visit www.axisflying.com