

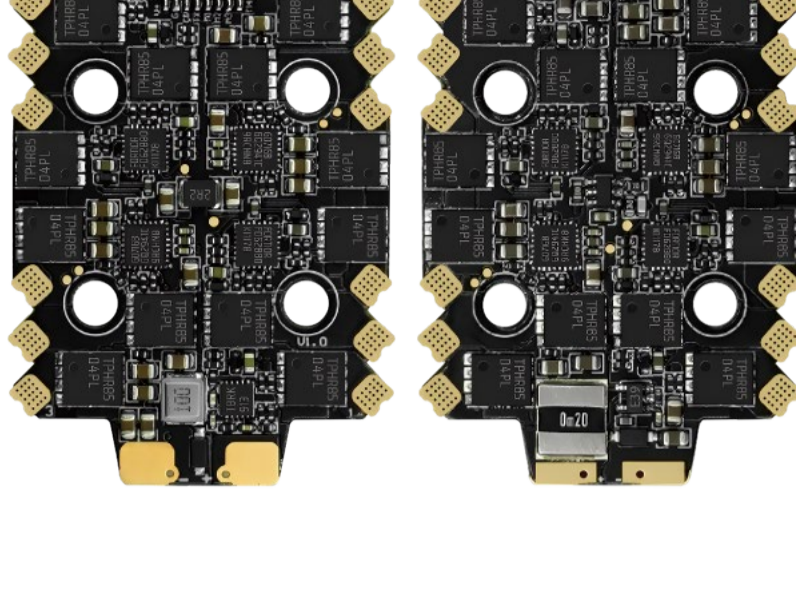
SQESC E70 G1

4-in-1 ESC

4合1电调说明书

感谢您购买本产品!请您在使用前仔细阅读说明书,严格遵守规定的操作说明,使用者需具备一定电子基础和良好的焊接技术,错误的使用可能造成人身伤害和设备损坏。我们不承担因使用本产品或擅自对产品进行改造而引起的任何责任,包括但不限于对附带损失或间接损失的赔偿责任。

Thanks for buying this product! Please read the instructions carefully before use and strictly abide by the specified operating instructions. Users must have a certain electronic foundation and good welding skills. Wrong use may cause personal injury and equipment damage. We do not assume any liability arising from the use of this product or unauthorized modifications to the product, including but not limited to liability for incidental or indirect losses.



1. English instruction manual	01 - 03
2. 中文说明书	04 - 06



Note: Once this product is activated and affects secondary sales, it is not eligible for a 7-day return without reason

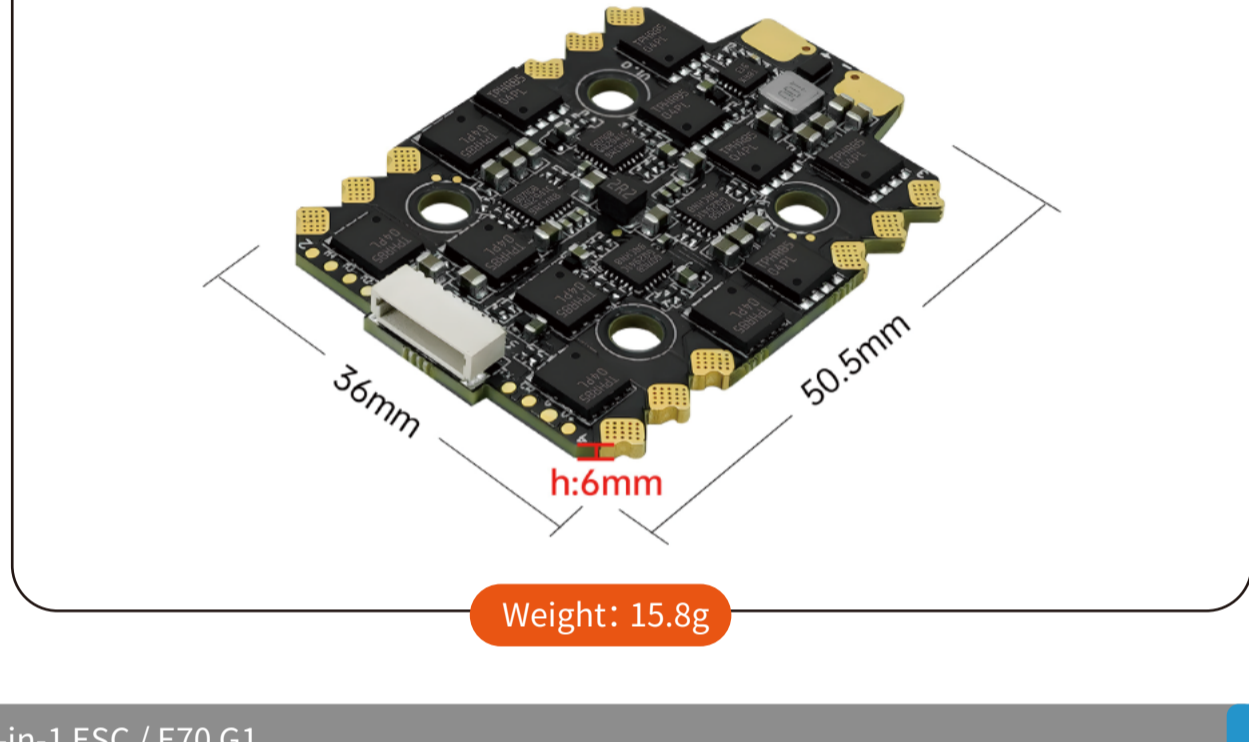
1 PRODUCT DESCRIPTION

- STM32G071 high-performance processor, using BLHeli_32 | AM32 firmware, 2-8S wide voltage input, single-channel continuous current 70A, peak current up to 150A.
- Built-in galvanometer, supports telemetry return, and updates motor speed, temperature, current and other data in real time.
- High-quality high-power MOSFET, ultra-high efficiency conversion, reducing losses and extending flight time.
- High copper thickness multi-layer PCB design increases over-current capability, efficient heat dissipation performance, and is not afraid of load pressure.
- Precise switch interval time control, speeding up the response speed of the ESC, smooth control, and delicate feel.
- PWM frequency supports 16KHz-128KHz, and excellent circuit design solves the problem of out-of-synchronization.
- Innovative design, oblique surface soldering pad, motor wiring layout is more beautiful and safe, while reducing welding difficulty.
- 20*20mm installation hole spacing design, compact structure, adaptable to various types of racks, no pressure during installation.

2 PRODUCT PARAMETERS

Model	E70 G1	Firmware Version	AM32 BLHeli_32
Processor	STM32G071	Telemetry Return	Support
PWM Frequency	16KHz-128KHz	Galvanometer	YES
Working Voltage	2-8S Lipo/LiHV	BEC	NO
Continuous Current	70A	Mounting Hole Spacing	20x20mm, Φ4mm/M3
Peak Current	150A	Product Size	50.5*36*6mm
Support Protocol	Dshot600/300/150, Oneshot, Multishot, PWM	Product Weight	15.8g

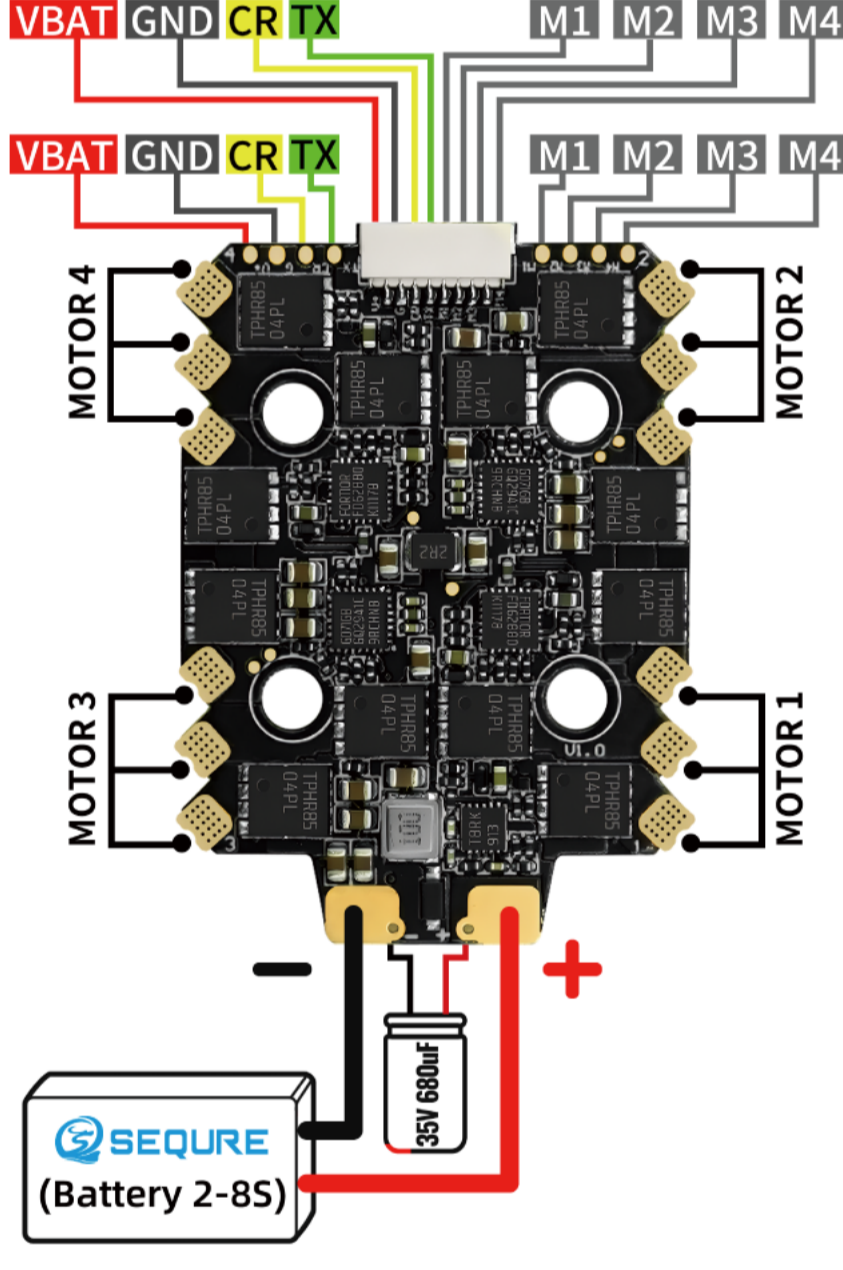
3 SIZE AND WEIGHT



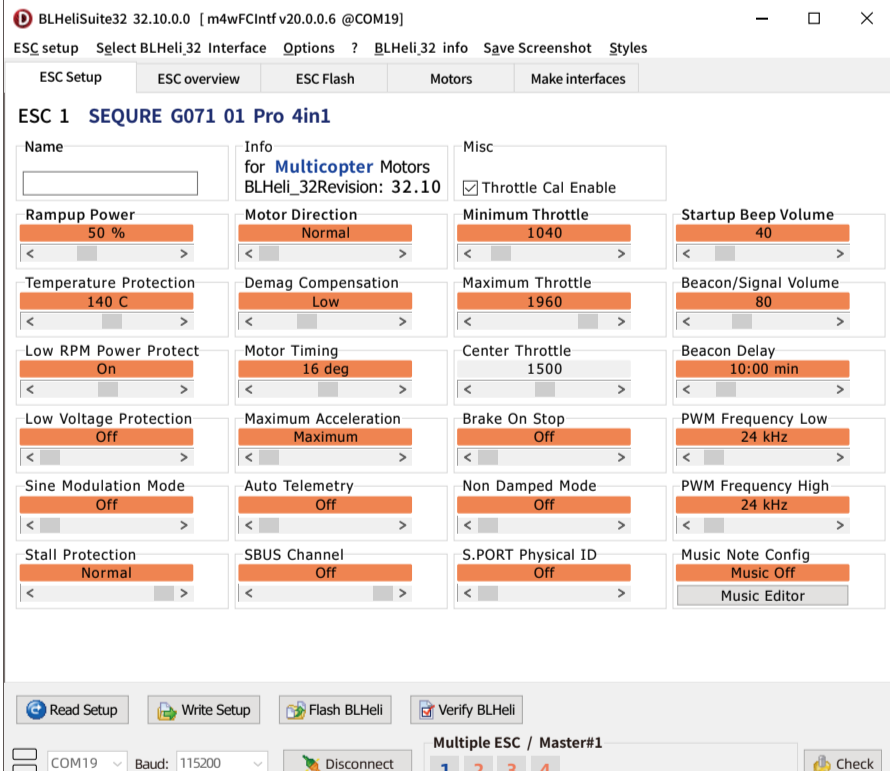
4-in-1 ESC / E70 G1

1

4 WIRING DIAGRAM



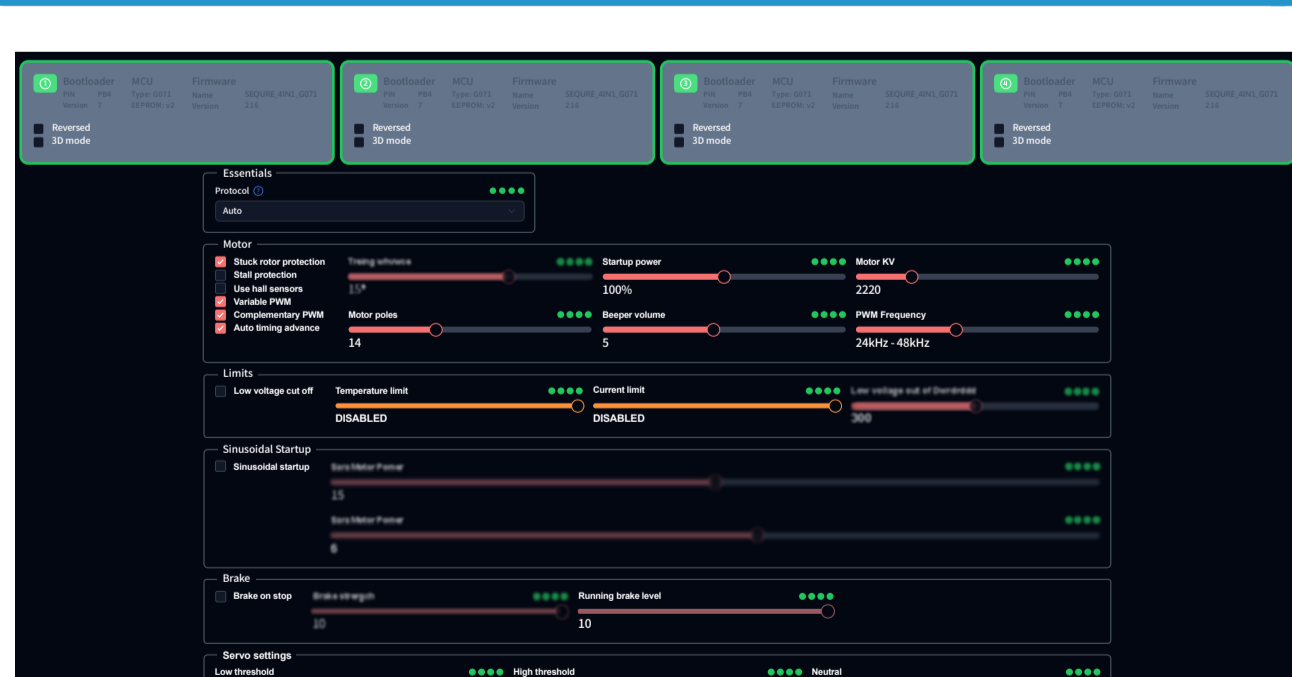
5 ESC SETTING



BLHeli_32 firmware visual programming parameter adjustment interface (pre-release)

4-in-1 ESC / E70 G1

5



AM32 firmware visual programming parameter adjustment interface Website: am32.ca

6 WARRANTY TERMS

1. For those performance faults caused by non-human factors within 3 months from the date of purchase, we provide repair & maintenance service for free. After 3 months, no labor fee will be charged for repairs. If you would like to replace parts, you must pay for the cost.
2. All man-made damage, faults caused by self disassembly & improper use, and all consumables like soldering tips are not covered by the warranty.

7 SAFETY PRECAUTIONS ⚠

- Please do not flash unofficial firmware to avoid damage to the ESC.
- Please do not use it beyond the ESC operating voltage and current range.
- Please check and make sure the positive and negative polarity are correct before powering on.
- Please use the product in compliance with local regulations and ensuring safety.
- Please use accessories that meet safety standards and store them out of reach of children.



www.sequiremall.com
info@sequiremall.com

4-in-1 ESC / E70 G1

3

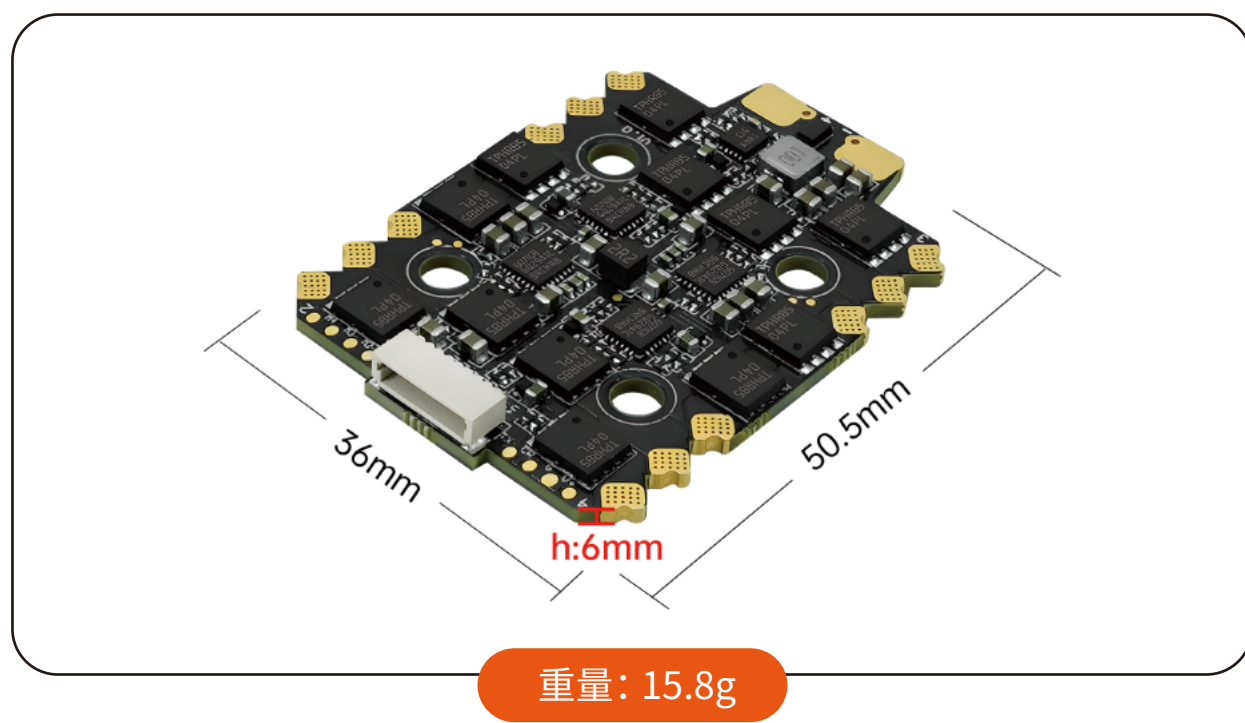
1 产品描述

- STM32G071高性能处理器, 使用BLHeli_32 | AM32 固件, 2-8S宽电压输入, 单路持续电流70A, 峰值电流高达150A。
- 内置电流计, 支持遥测回传, 实时更新电机转速, 温度, 电流等数据。
- 优质的高功率MOSFET, 超高的效率转换, 降低损耗, 延长飞行时间。
- 高铜厚多层PCB设计, 增大过流能力, 高效的散热性能, 不惧负载压力。
- 精准开关间隔时间控制, 加快电调的响应速度, 控制流畅, 手感细腻。
- PWM频率支持16KHz-128KHz, 优异的电路设计, 解决失步问题。
- 创新设计, 斜向面焊盘, 电机走线布局更加美观安全, 同时降低焊接难度。
- 20*20mm安装孔距设计, 结构紧凑, 适配多种类型机架, 装机无压力。

2 产品参数

型号名称	E70 G1	固件版本	AM32 BLHeli_32
处理器	STM32G071	遥测回传	支持
PWM频率	16KHz-128KHz	电流计	YES
工作电压	2-8S Lipo/LiHV	BEC	NO
持续电流	70A	安装孔距	20x20mm, Φ4mm/M3
峰值电流	150A	产品尺寸	50.5*36*6mm
支持协议	Dshot600/300/150, Oneshot, Multishot, PWM	产品重量	15.8g

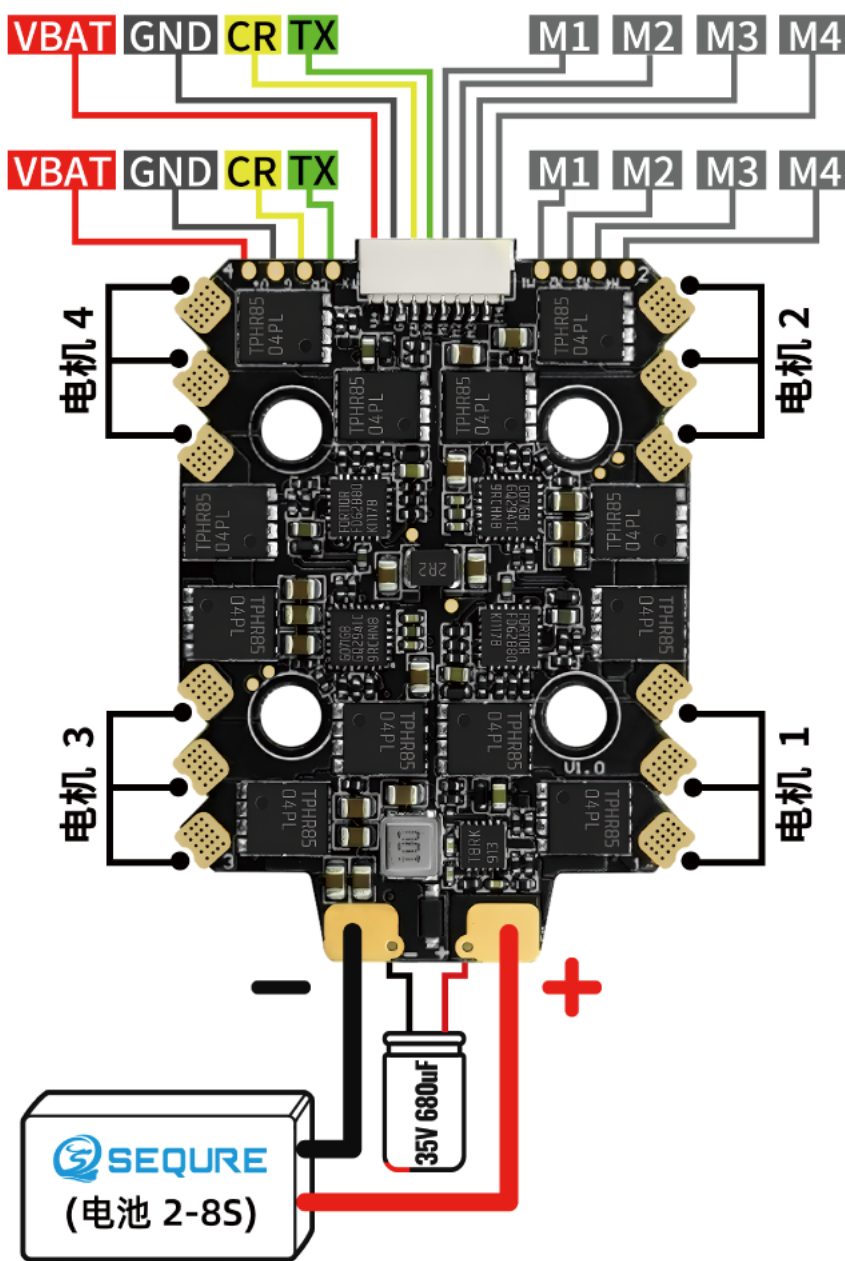
3 尺寸重量



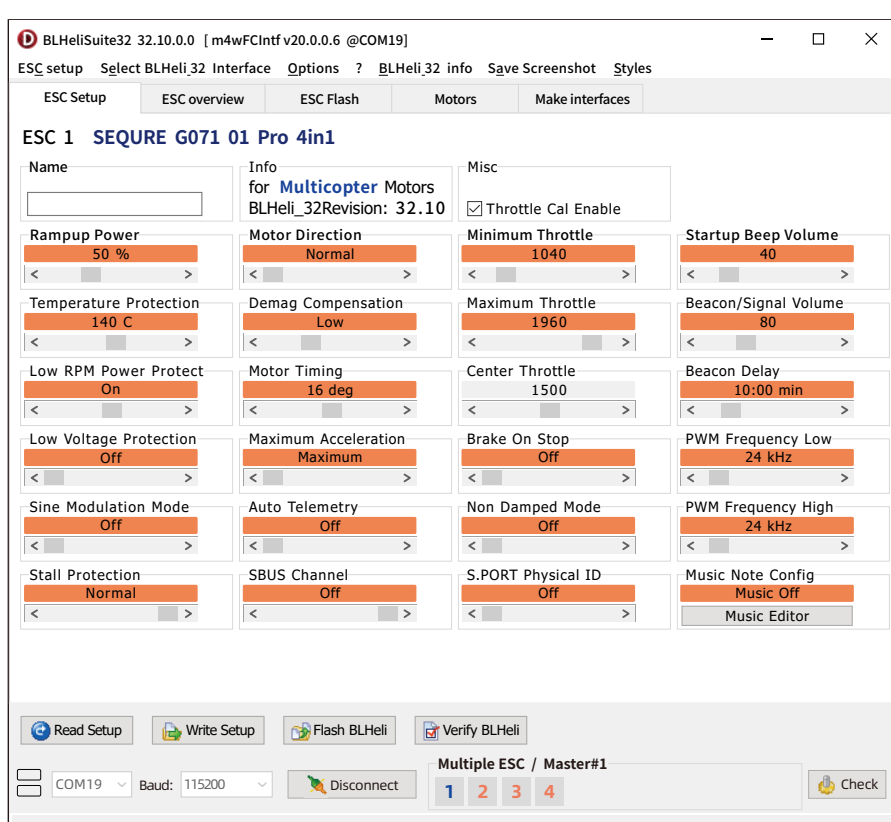
4合1电调 / E70 G1

4

4 接线图



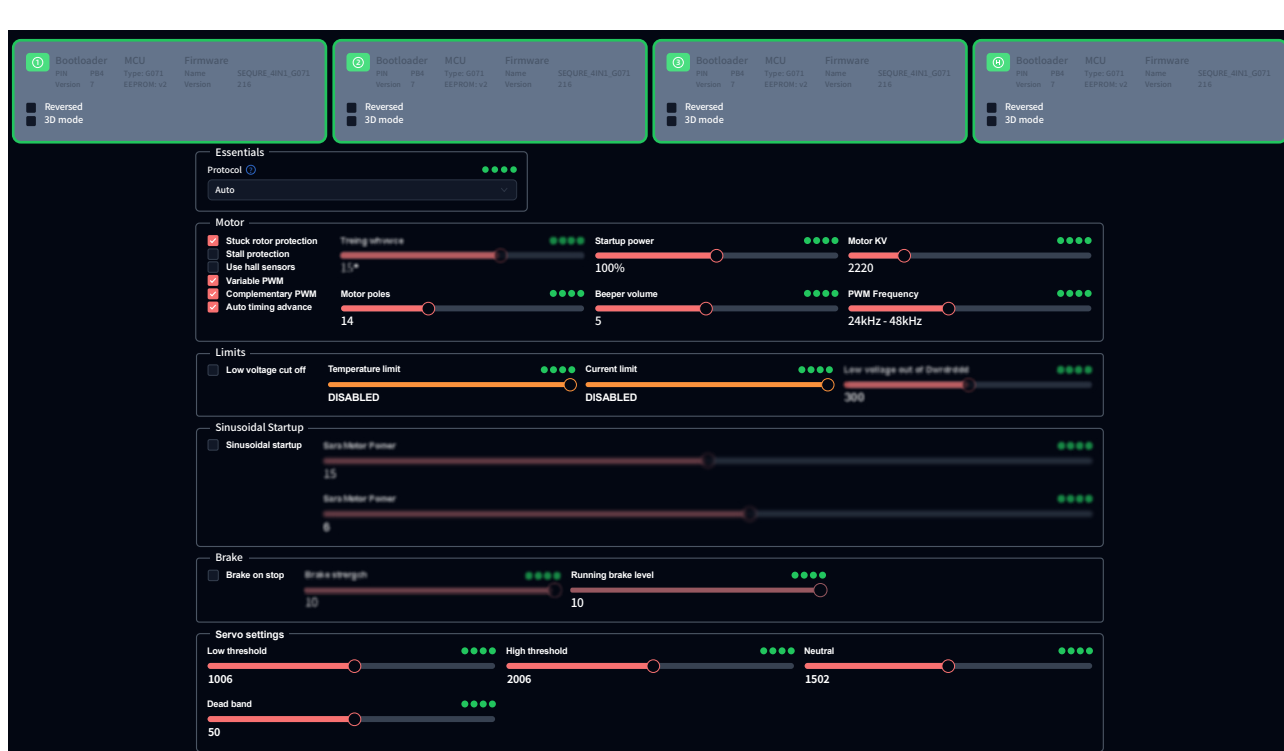
5 电调参数



BLHeli_32固件可视化编程调参界面 (预发布版本)

4合1电调 / E70 G1

5



AM32固件可视化编程调参界面

调参网址: am32.ca

6 保修条款

- (1)自购机之日起3个月内出现非人为因素造成的性能故障, 厂家提供免费维修服务。3个月后, 修理不收取人工费, 若更换配件, 费用需用户承担。
- (2)一切人为损坏, 自行拆机, 使用不当造成的故障, 不在保修范围。

7 安全须知

- 请勿刷写非官方指定的固件, 以免损坏电调。
- 请不要超过ESC工作电压, 电流范围使用。
- 请供电前检查并确保正负极性无误, 才能通电使用。
- 请在符合当地法规和确保安全情况下使用产品。
- 请使用符合安全标准的配件, 存放在儿童不容易接触的地方。



www.sequiremall.com
 info@sequiremall.com
 0769-89399884

4合1电调 / E70 G1

6