

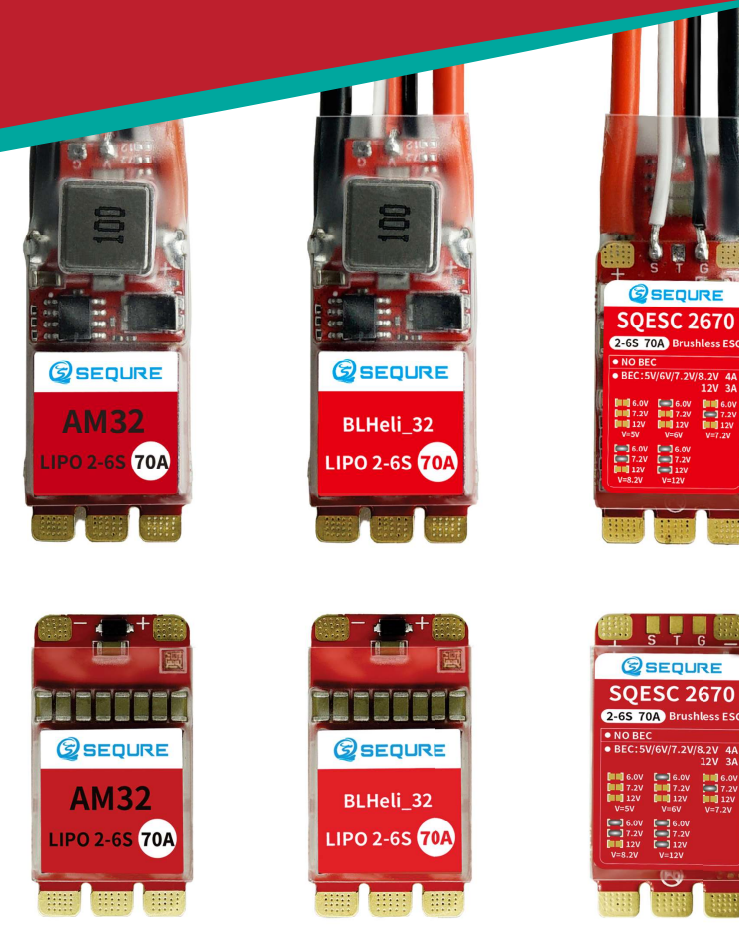
SQESC 2670

Brushless ESC

无刷电子调速控制器说明书

感谢您购买本产品!请您在使用前仔细阅读说明书,严格遵守规定的操作说明,使用者需具备一定电子基础和良好的焊接技术,错误的使用可能造成人身伤害和设备损坏。我们不承担因使用本产品或擅自对产品进行改造而引起的任何责任,包括但不限于对附带损失或间接损失的赔偿责任。

Thanks for buying this product! Please read the instructions carefully before use and strictly abide by the specified operating instructions. Users must have a certain electronic foundation and good welding skills. Wrong use may cause personal injury and equipment damage. We do not assume any liability arising from the use of this product or unauthorized modifications to the product, including but not limited to liability for incidental or indirect losses.



1. English instruction manual 01 - 03
2. 中文说明书 04 - 06



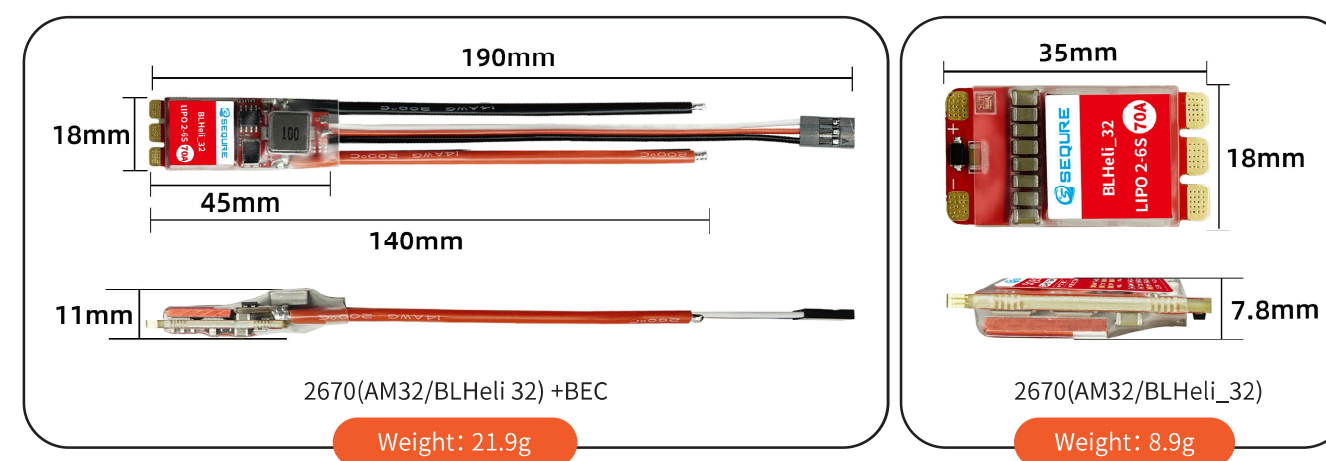
1 PRODUCT DESCRIPTION

- Adopting 32-bit high-performance processor STM32G071, with a working frequency of up to 64MHz and maximum support 128KHz motor PWM frequency.
- PCB adopts 8-layer 302 immersion gold process, high-power MOS combined with metal heat sink, which can effectively dissipate heat under high current load and continue to work stably.
- Supports multiple motion modes such as unidirectional, bidirectional, and braked motors.
- Supports multiple protections such as low voltage protection, temperature protection, locked rotor protection, and current protection.
- The ESC automatically detects the throttle signal when it is powered on, supports all Dshot signals, and also supports signal protocols such as PWM, Oneshot and Multishot.
- BEC supports adjustable outputs of 5V/4A, 6V/4A, 7.2V/4A, 8.2V/4A, and 12V/3A, which can directly supply power to external devices such as receivers and servos, making the application of ESCs more extensive and flexible.
- Visual programming parameter adjustment tool supports motor timing, throttle calibration, current detection, motor steering, telemetry signal and other settings.
- Onboard RGB LED color light settings, multiple LED colors can be customized.
- Widely used in FPV racing drone, multi-axis drones, fixed-wing, model ships, climbing vehicles, model cars and other scenarios.

2 PRODUCT PARAMETERS

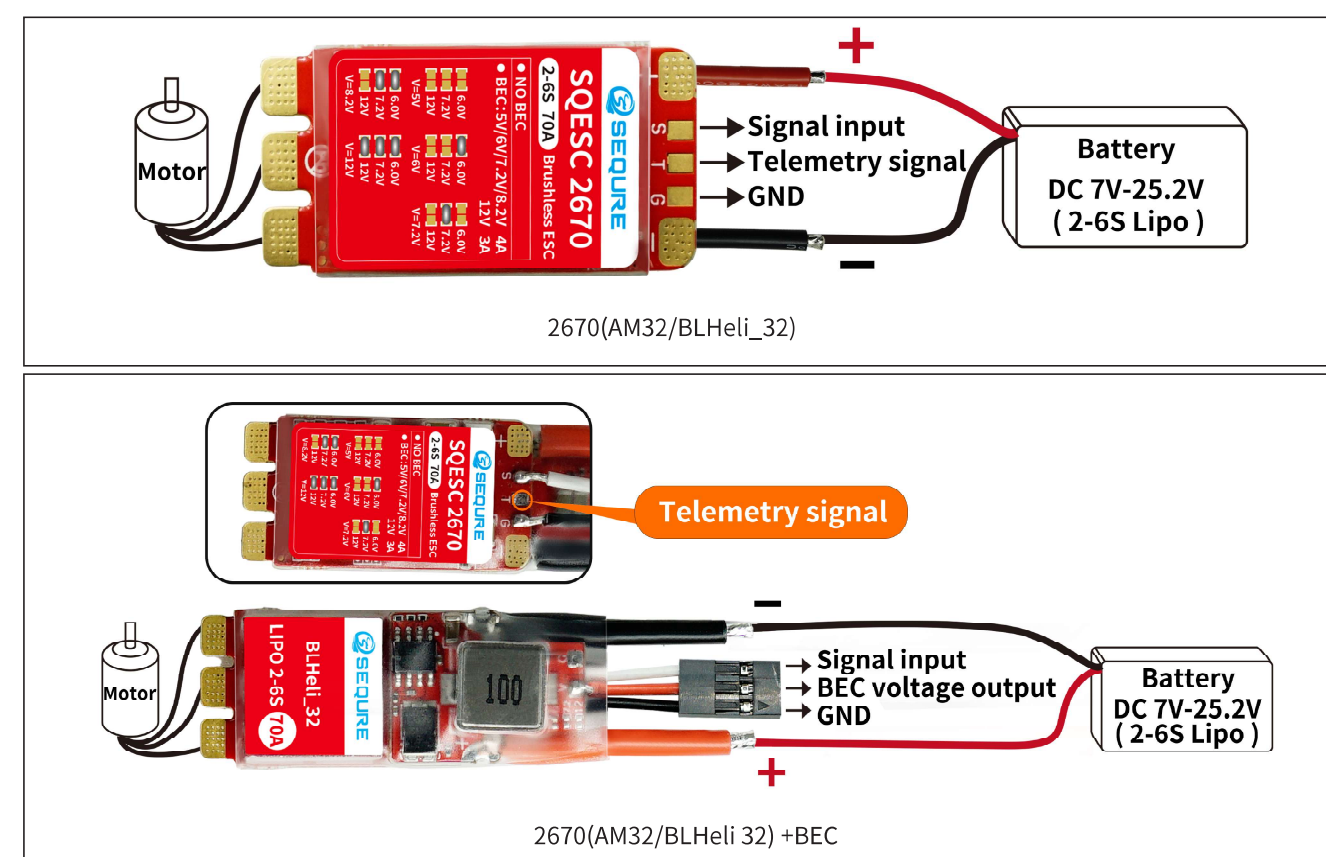
Model	SQESC 2670	Programming parameter adjustment	Support
Processor	STM32G071	Throttle calibration	Support
Input voltage	DC 7V-25.2V (2-6S Lipo)	Timing angle setting	Support
Continuous current (good heat dissipation)	70A	Current detection	Support
Maximum current (good heat dissipation)	110A	Telemetry signal	Support
Support firmware	BLHeli_32, AM32	Motor steering settings	Support
BLHeli_32 firmware	SEQUIRE_G071_01	RGB LED color lights	Support
AM32 firmware	SEQUIRE_G071	BEC (if any)	5V/4A, 6V/4A, 7.2V/4A, 8.2V/4A, 12V/3A adjustable
Signal protocol	Dshot (All), PWM, Oneshot, Multishot, etc.	Application scenarios	FPV racing drone, multi-axis drones, fixed-wing UAV, model ships, climbing vehicles, model cars, etc.

3 SIZE AND WEIGHT

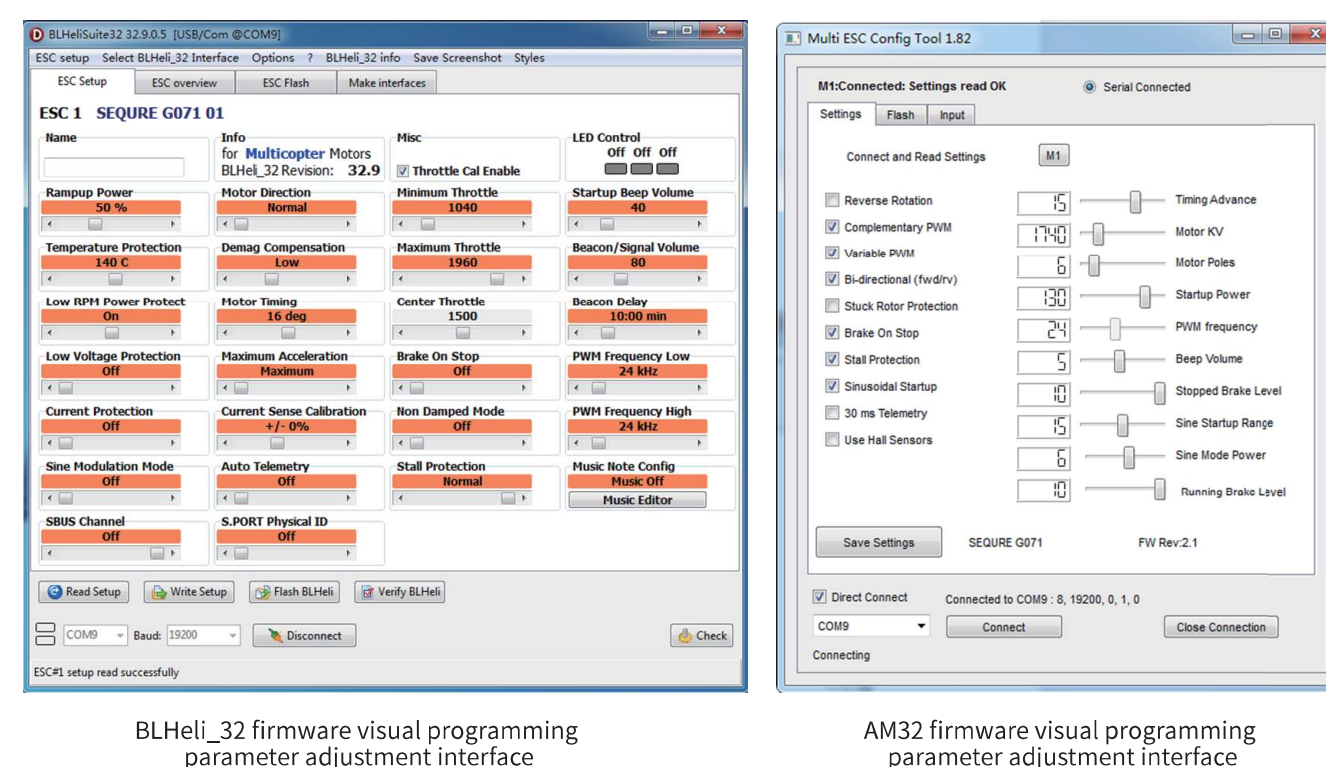


SQESC 2670 Brushless ESC

4 WIRING DIAGRAM



5 PROGRAMMING PARAMETERS



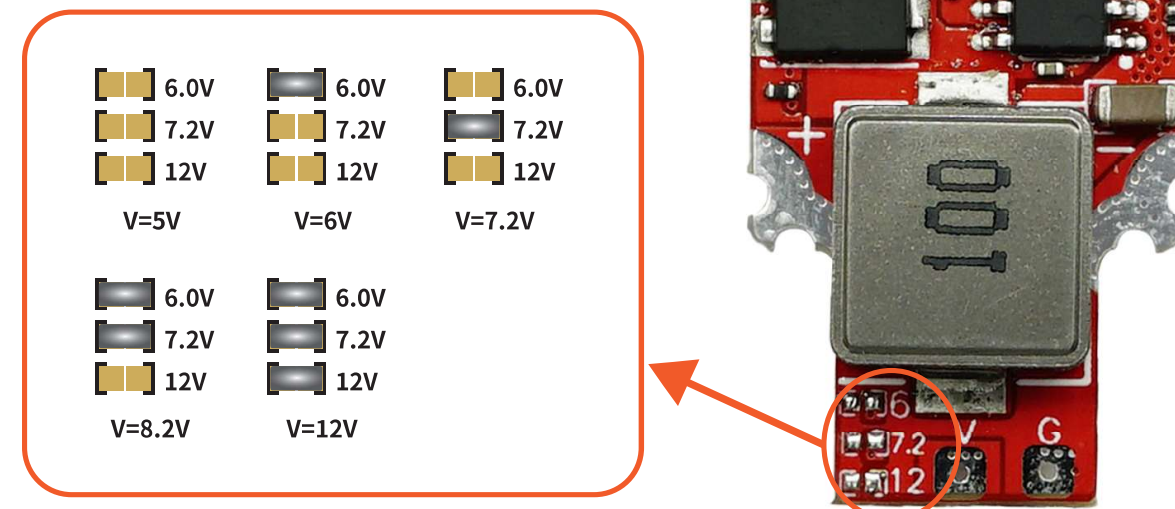
BLHeli_32 firmware visual programming parameter adjustment interface

AM32 firmware visual programming parameter adjustment interface

SQESC 2670 Brushless ESC

6 BEC SETTINGS (IF ANY)

- BEC: 5V/6V/7.2V/8.2V/12V 3A



7 WARRANTY TERMS

1. For those performance faults caused by non-human factors within 3 months from the date of purchase, we provide repair & maintenance service for free. After 3 months, no labor fee will be charged for repairs. If you would like to replace parts, you must pay for the cost.
2. All man-made damage, faults caused by self disassembly & improper use, and all consumables like soldering tips are not covered by the warranty.

8 SAFETY PRECAUTIONS

- Please do not flash unofficial firmware to avoid damage to the ESC.
- Please do not use it beyond the ESC operating voltage and current range.
- Please check and make sure the positive and negative polarity are correct before powering on.
- Please use the product in compliance with local regulations and ensuring safety.
- Please use accessories that meet safety standards and store them out of reach of children.



www.sequiremall.com
info@sequiremall.com

SQESC 2670 Brushless ESC