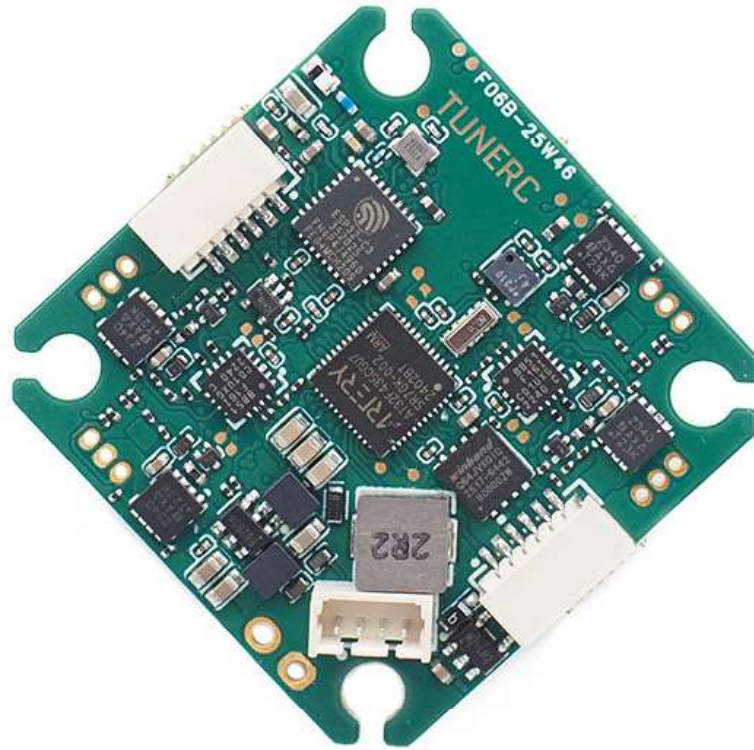
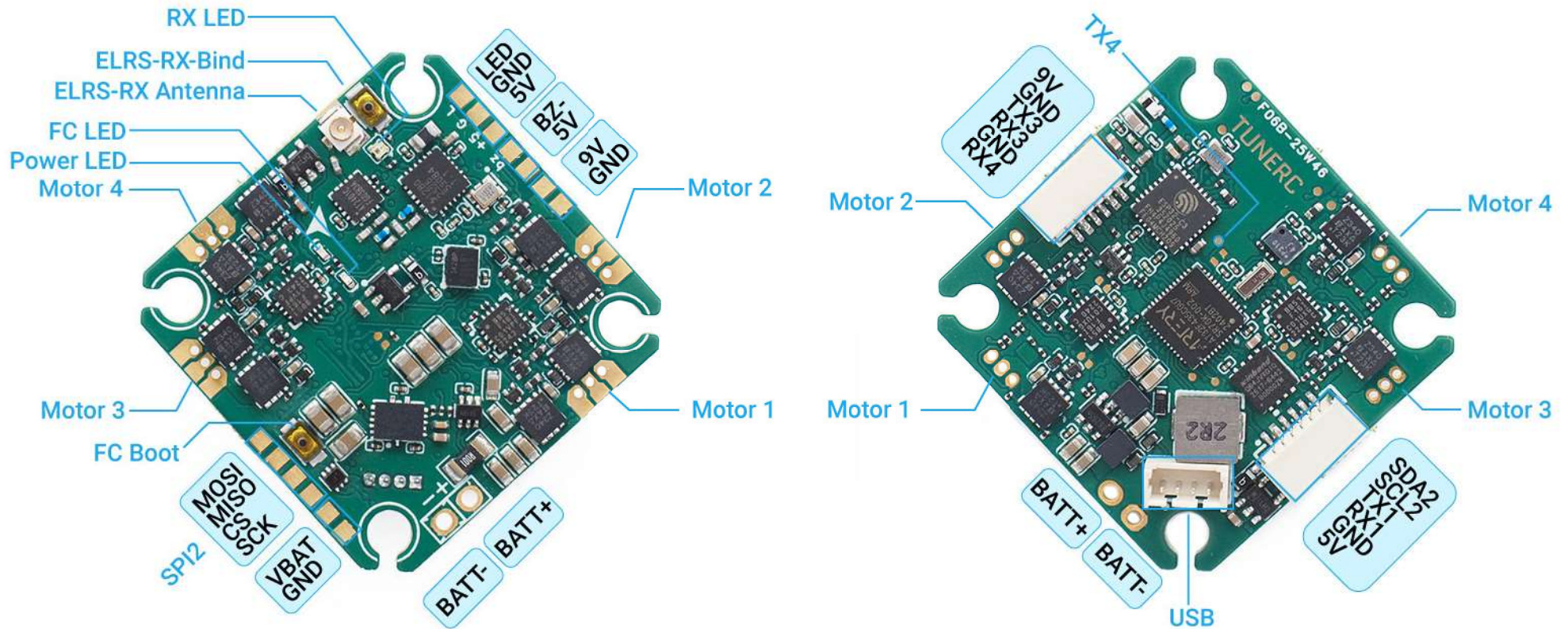


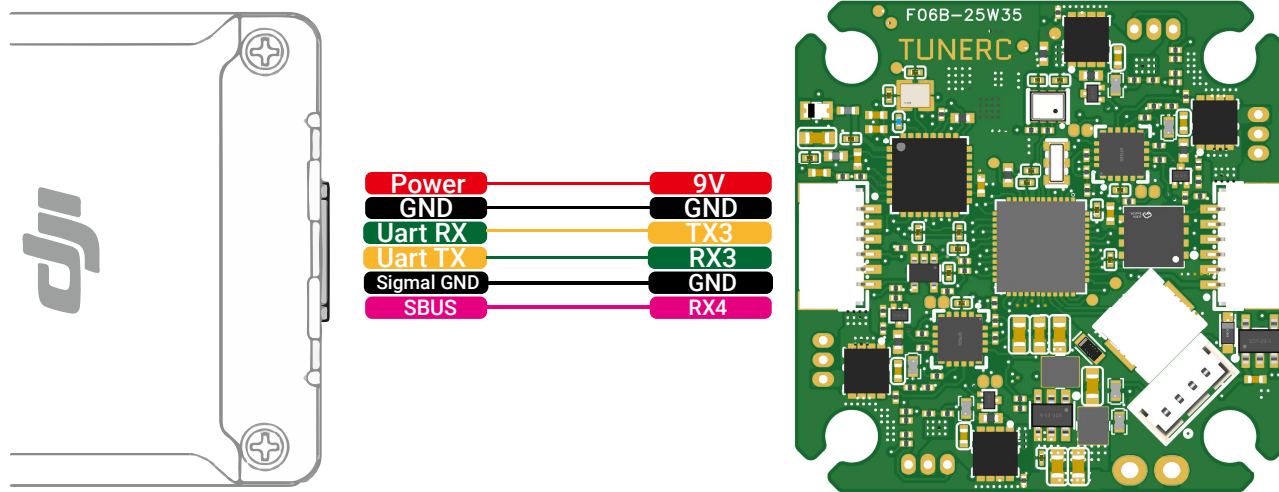
Wiring Diagram for EZ3 1S-2S AIO



Pinout Diagram for EZ3 1S-2S AIO



DJI O4 Pro / O4 / O3 Wirng

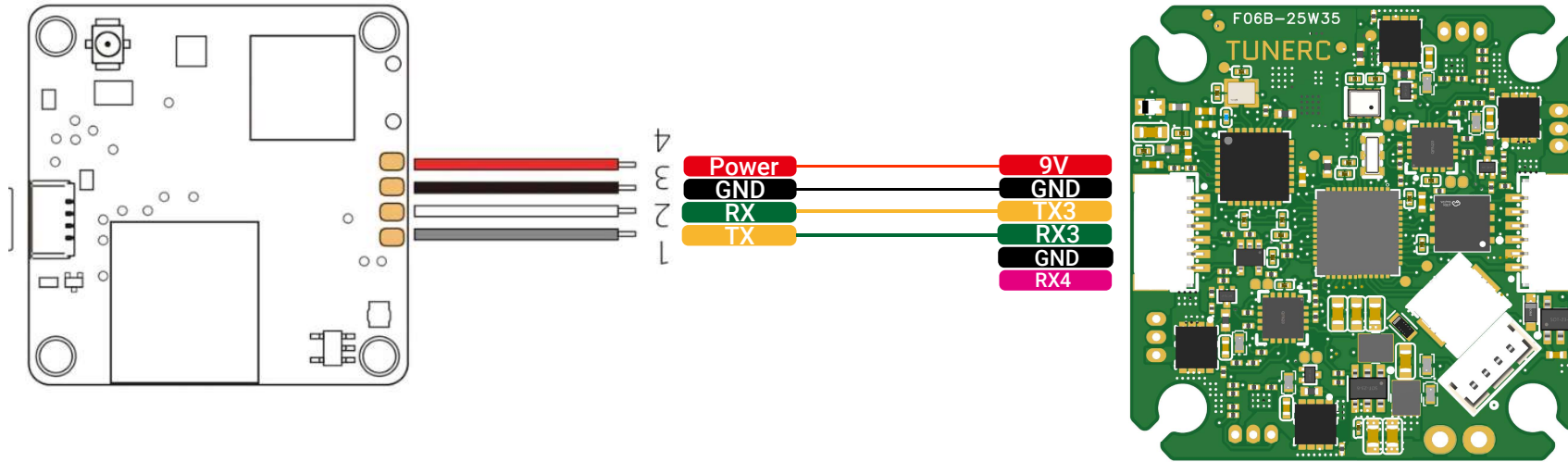


DJI O4 Pro / O4 / O3 Air Unit

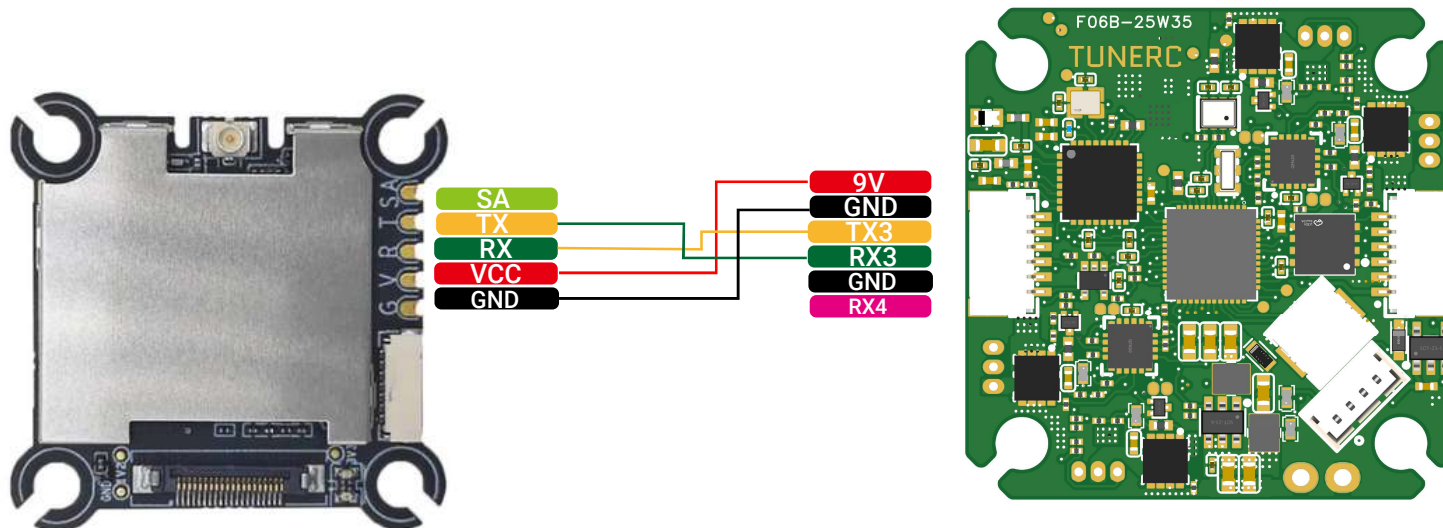
If you use DJI radio controller or you don't plan to use UART4, please connect the DJI air unit to the AIO as the diagram shows.

If you need to use UART4 for purposes other than DJI remote controller, you need to disconnect the Signal GND and SBUS wire from the DJI VTX plug.

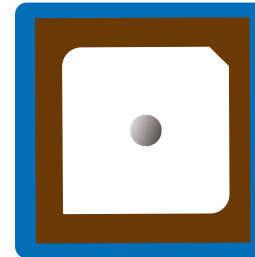
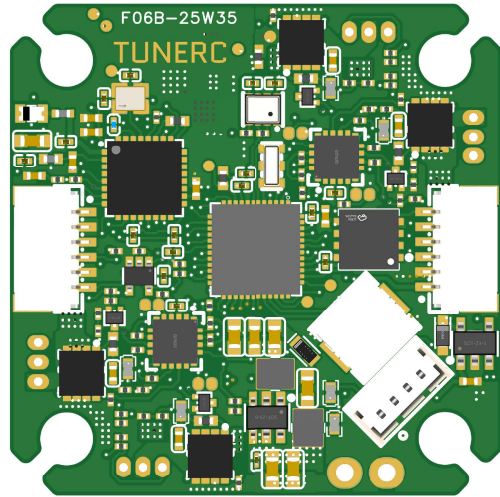
Walksnail HD Avatar 1S VTX Wiring



HDZero Whoop Lite VTX Wiring

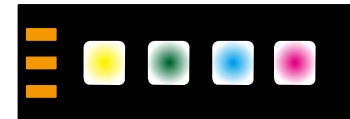
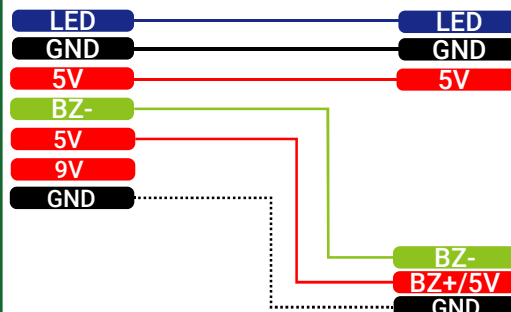
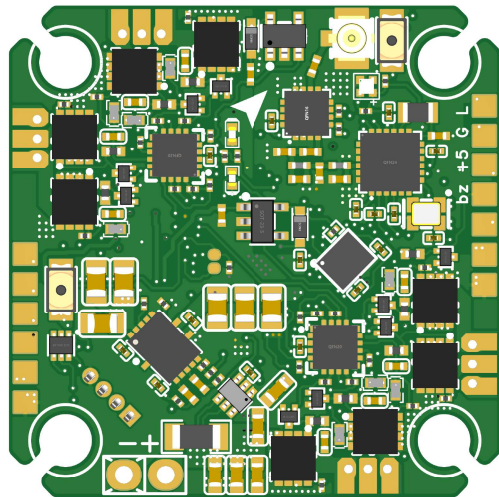


GPS / LED / Buzzer Wiring



GPS+Magnetometer Module

Different GPS+Magnetometer module has different wiring order, please check the pin wiring order carefully before wiring it with the AIO.



LED



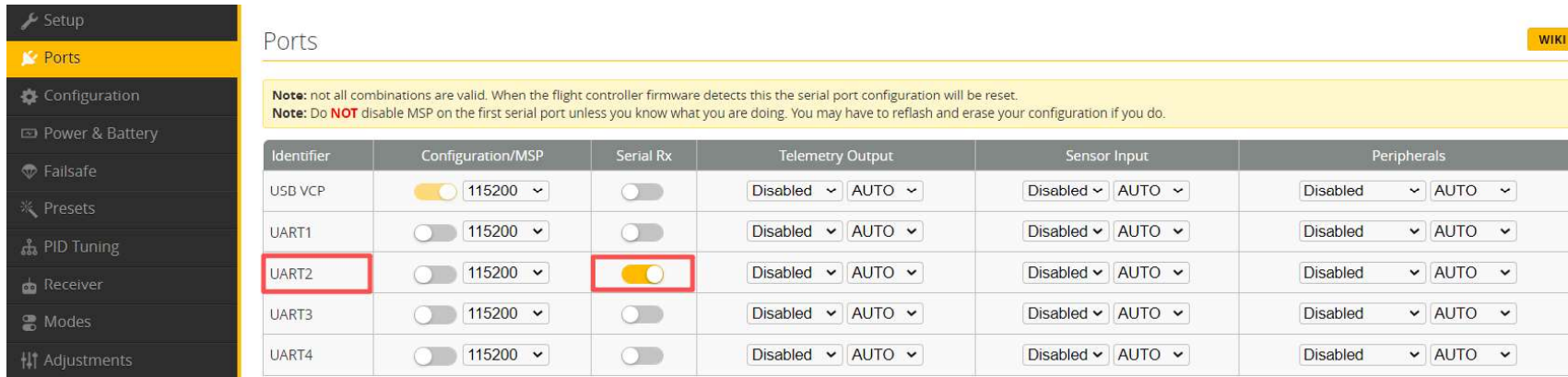
Buzzer

If your buzzer only has two pins: "BZ+" "BZ-", you can directly connect "BZ+" to "5V" "BZ-" to "BZ-"

If your buzzer has three wires (BZ-,5V/BZ+, GND), you can connect "BZ-" to "BZ-", "5V/BZ+" to "5V", "GND" to "GND"

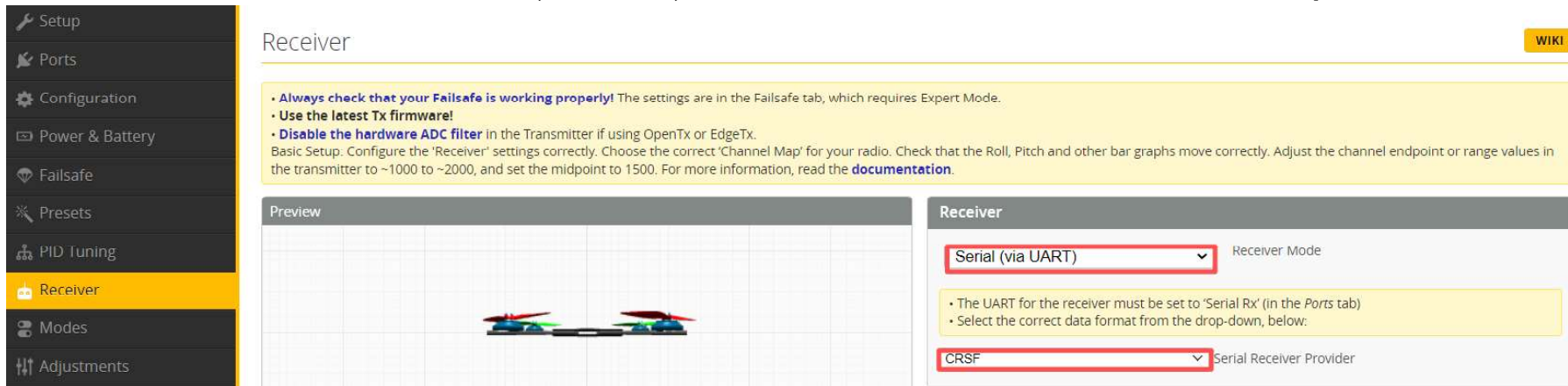
ELRS Receiver Betaflight Setup

In Betaflight 4.5, under “Ports” tab, enable “Serial Rx” under UART2 for the ELRS RX.



Identifier	Configuration/MSP	Serial Rx	Telemetry Output	Sensor Input	Peripherals
USB VCP	<input checked="" type="checkbox"/> 115200	<input type="checkbox"/>	Disabled AUTO	Disabled AUTO	Disabled AUTO
UART1	<input type="checkbox"/> 115200	<input type="checkbox"/>	Disabled AUTO	Disabled AUTO	Disabled AUTO
UART2	<input type="checkbox"/> 115200	<input checked="" type="checkbox"/>	Disabled AUTO	Disabled AUTO	Disabled AUTO
UART3	<input type="checkbox"/> 115200	<input type="checkbox"/>	Disabled AUTO	Disabled AUTO	Disabled AUTO
UART4	<input type="checkbox"/> 115200	<input type="checkbox"/>	Disabled AUTO	Disabled AUTO	Disabled AUTO

Under “Receiver” tab, choose “Serial (via UART)” receiver mode and “CRSF” serial receiver provider.



Receiver

- **Always check that your Failsafe is working properly!** The settings are in the Failsafe tab, which requires Expert Mode.
- **Use the latest Tx firmware!**
- **Disable the hardware ADC filter** in the Transmitter if using OpenTx or EdgeTx.

Basic Setup. Configure the 'Receiver' settings correctly. Choose the correct 'Channel Map' for your radio. Check that the Roll, Pitch and other bar graphs move correctly. Adjust the channel endpoint or range values in the transmitter to ~1000 to ~2000, and set the midpoint to 1500. For more information, read the [documentation](#).

Preview

Receiver

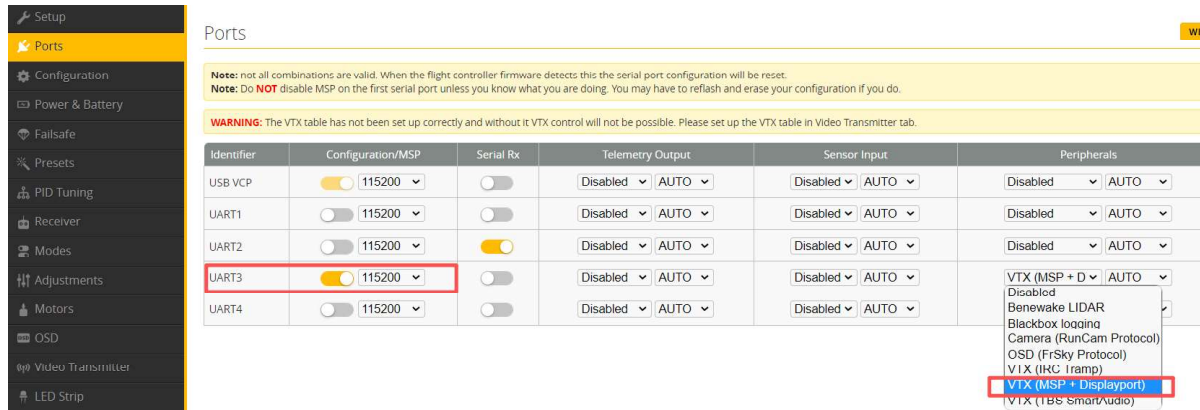
Serial (via UART) Receiver Mode

• The UART for the receiver must be set to 'Serial Rx' (in the Ports tab)
• Select the correct data format from the drop-down, below:

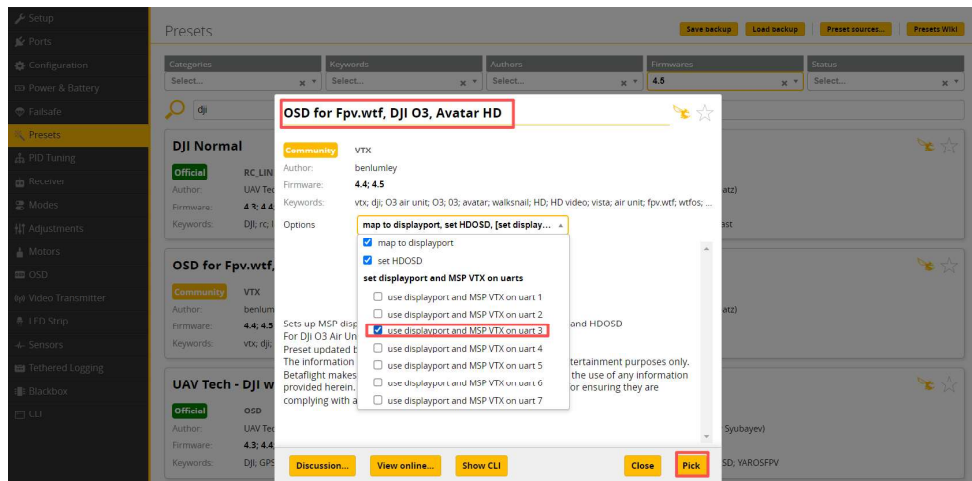
CRSF Serial Receiver Provider

DJI O4Pro/O4/O3 and Walksnail Avatar HD 1S VTX Betaflight Setup

In Betaflight 4.5, under "Ports" tab, please enable "Configuration MSP" and choose "VTX (MSP + Displayport)" under UART3.

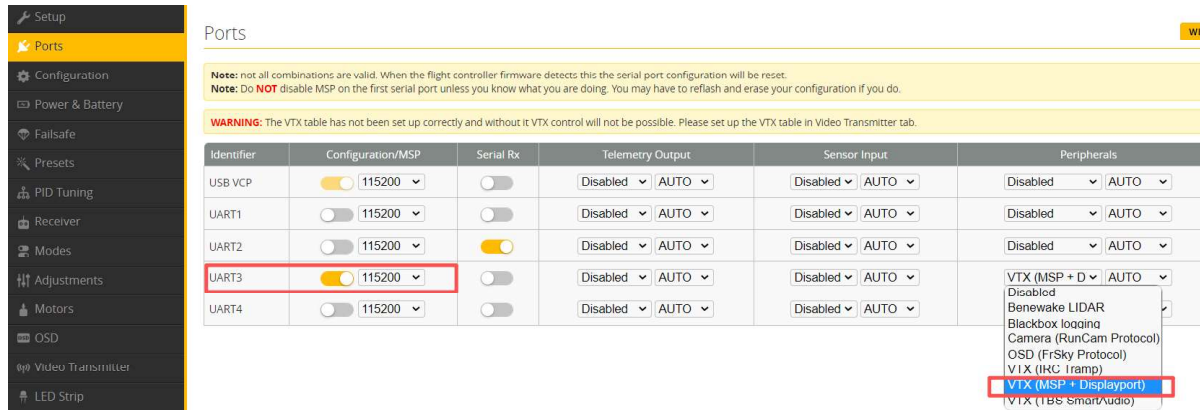


Under "Presets" tab, search DJI OSD, select "OSD for Fpv.wtf, DJI O3, Avatar HD " and select the uart3 for the DJI VTX under "Options" drop-down menu, finally click "Pick"

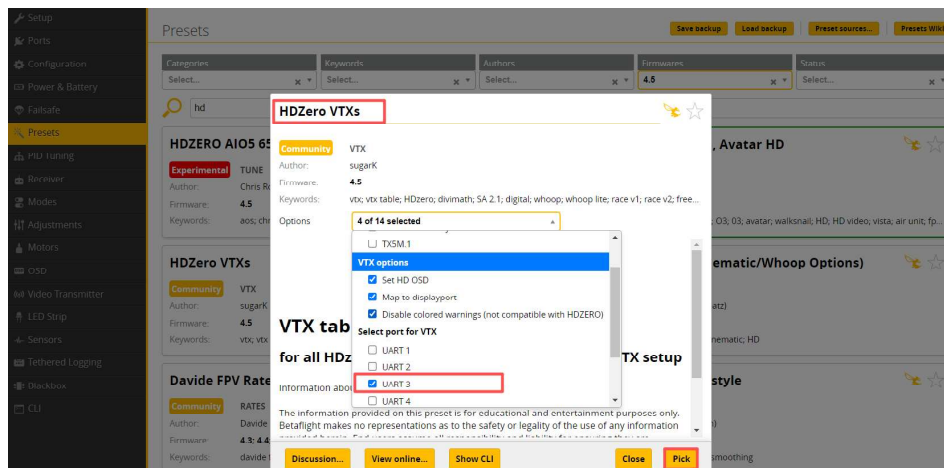


HDZero WhoopLite VTX Betaflight Setup

In Betaflight 4.5, under "Ports" tab, please enable "Configuration MSP" and choose "VTX (MSP + Displayport)" under UART3.

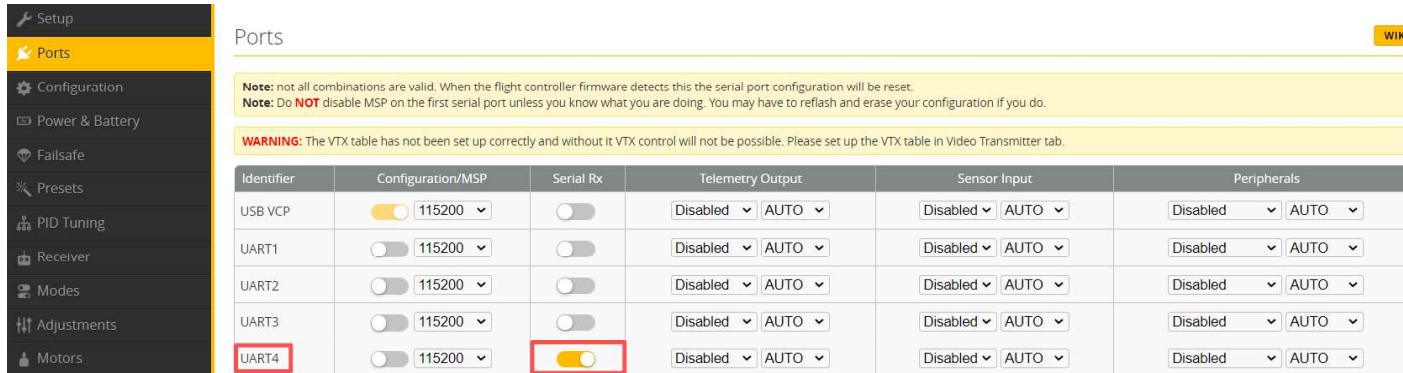


Under "Presets" tab, search "HDZero VTXs" and select the UART3 for the HDZero VTX under "Options", finally click "Pick"



DJI Radio Controller, VTX built-in Reciever Betaflight Setup

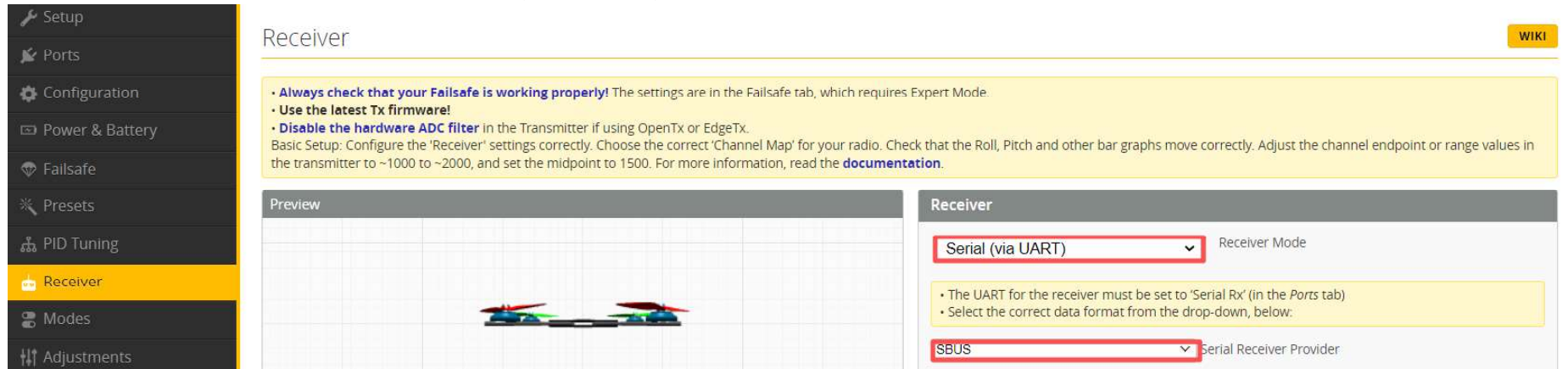
In Betaflight 4.5, under "Ports" tab, enable "Serial Rx" under UART4 for the ELRS RX.



The screenshot shows the Betaflight configuration interface for the "Ports" tab. The left sidebar contains a menu with "Ports" highlighted. The main area shows a table of port configurations. The "UART4" row is highlighted with a red box, and its "Serial Rx" toggle is also highlighted with a red box and turned on. A yellow warning box at the top states: "WARNING: The VTX table has not been set up correctly and without it VTX control will not be possible. Please set up the VTX table in Video Transmitter tab." Below the table, there are notes about MSP and VTX settings.

Identifier	Configuration/MSP	Serial Rx	Telemetry Output	Sensor Input	Peripherals
USB VCP	<input checked="" type="checkbox"/> 115200	<input type="checkbox"/>	Disabled AUTO	Disabled AUTO	Disabled AUTO
UART1	<input type="checkbox"/> 115200	<input type="checkbox"/>	Disabled AUTO	Disabled AUTO	Disabled AUTO
UART2	<input type="checkbox"/> 115200	<input type="checkbox"/>	Disabled AUTO	Disabled AUTO	Disabled AUTO
UART3	<input type="checkbox"/> 115200	<input type="checkbox"/>	Disabled AUTO	Disabled AUTO	Disabled AUTO
UART4	<input type="checkbox"/> 115200	<input checked="" type="checkbox"/>	Disabled AUTO	Disabled AUTO	Disabled AUTO

Under "Receiver" tab, choose "Serial (via UART)" receiver mode and "SBUS" serial receiver provider.



The screenshot shows the Betaflight configuration interface for the "Receiver" tab. The left sidebar contains a menu with "Receiver" highlighted. The main area shows a "Preview" section with a drone image and a "Receiver" section with two dropdown menus. The first dropdown is set to "Serial (via UART)" and the second is set to "SBUS". A yellow note box provides instructions: "The UART for the receiver must be set to 'Serial Rx' (in the Ports tab) Select the correct data format from the drop-down, below:"

Receiver Mode: Serial (via UART)

Serial Receiver Provider: SBUS