

# SQESC 14130 5-14S Lipo

## 无刷电子调速控制器/Brushless ESC

- 适用 Firmware Suitable for
- 多旋翼无人机 • Multi-rotor Drones Airplane
  - 航模植保机 • Models Crop Protection Aircraft
  - 直升机 • Helicopters
  - 模型船 • Model Ships
  - RC模型车 • RC Model Cars
  - 冲浪板 • Surfboards

感谢您购买本产品!请您在使用前仔细阅读说明书,严格遵守规定的操作说明,使用者需具备一定电子基础和良好的焊接技术,错误的使用可能造成人身伤害和设备损坏。我们不承担因使用本产品或擅自对产品进行改造而引起的任何责任,包括但不限于对附带损失或间接损失的赔偿责任。

Thanks for buying this product! Please read the instructions carefully before use and strictly abide by the specified operating instructions. Users must have a certain electronic foundation and good welding skills. Wrong use may cause personal injury and equipment damage. We do not assume any liability arising from the use of this product or unauthorized modifications to the product, including but not limited to liability for incidental or indirect losses.



1. English instruction manual ..... 01 - 04
2. 中文说明书 ..... 05 - 08



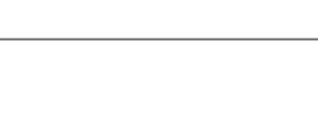
### 1. Product Description

- (1) Adopting 32-bit high-performance processor STM32G071. Supporting AM32/ESCape32/BLHeli\_32 firmware. It can program multiple motion modes of a motor, like unidirectional, bidirectional, and brake.
- (2) Equips with high-power MOSFET, and combines with metal radiator, this esc dissipates heat effectively under high current load and works stably & continuously.
- (3) Supports multiple protections such as low voltage protection, temperature protection, locked rotor protection, and current protection.
- (4) The ESC automatically detects the throttle signal when it is powered on, supports all Dshot signals, and also supports signal protocols such as PWM, Oneshot and Multishot.
- (5) Visual programming parameter adjustment tool supports motor timing, throttle calibration, current detection, motor steering, telemetry signal and other settings.
- (6) Onboard RGB LED color light settings, multiple LED colors can be customized.
- (7) Widely used in multi-axis UAV, fixed-wing drones, crop protection aircraft, helicopters, multi rotor drones, climbing cars, off-road model vehicles, model ships, surfboards, water sports products, etc

### 2. Parameters Of Product

Model Name	SQESC 14130
Processor	STM32G071
Input Voltage	DC 18V-59V (5-14S Lipo)
Continuous Current (Good Heat Dissipation)	130A
Maximum current (Good Heat Dissipation)	220A
Support Firmware	AM32, ESCape32, BLHeli_32
Signal Protocol	Dshot(All), PWM, Oneshot, Multishot, etc.
RPM Signal Line	AM32 (YES) , ESCape32 (YES) , BLHeli_32 (NO)
Programming Parameter Adjustment	Support
Throttle Calibration	Support
Timing Angle Setting	Support
Current Detection	Support
Telemetry Signal	Support
Motor Steering Settings	Support
RGB LED Color Lights	Support
BEC	NO
Product Size	55*30*23mm(L*W*H)
Product Weight	61.5g

### 14130 Brushless ESC Manual



Application Scenarios	Multi-axis UAV, fixed-wing drones, crop protection aircraft, helicopters, multi rotor drones, climbing cars, off-road model vehicles, model ships, surfboards, water sports products, etc
-----------------------	---

### 3. Package Included

14130 (AM32) / 14130 (ESCape32) / 14130 (BLHeli\_32)



- 1 14130 ESC × 1
- 2 300mm Twisted Pair Cable × 2
- 3 30\*90mm Transparent Heat Shrink Tubing × 2
- 4 4\*250mm Black Tie Straps × 1

### 4. Overall Dimension

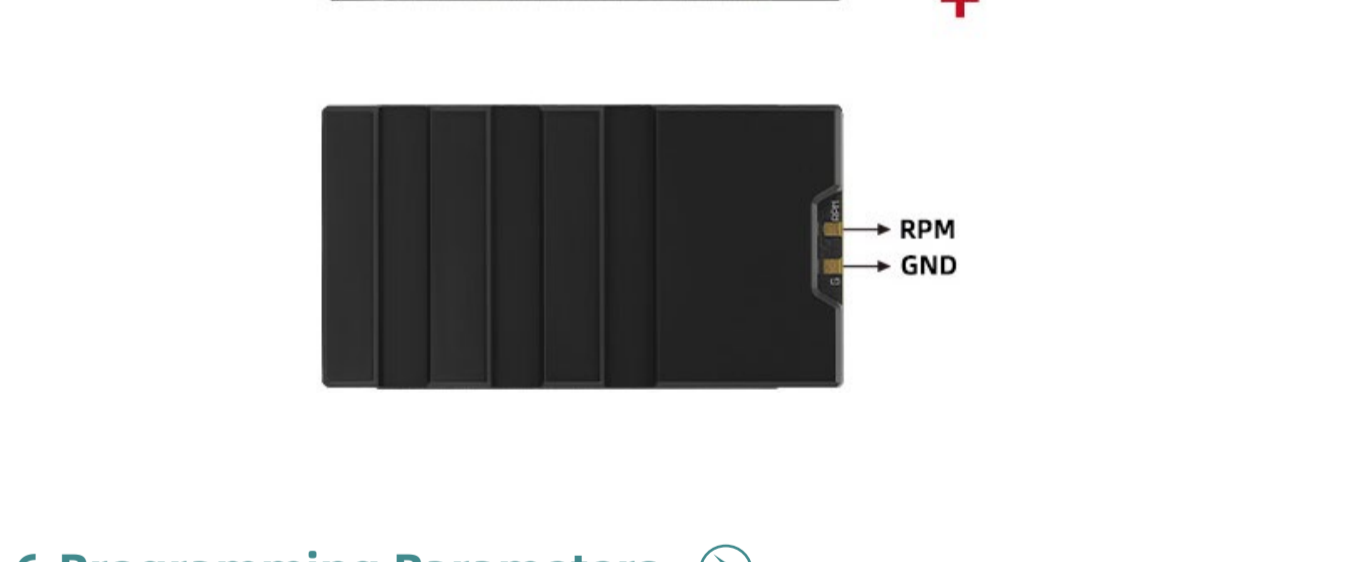
14130 (AM32) / 14130 (ESCape32) / 14130 (BLHeli\_32), Optional



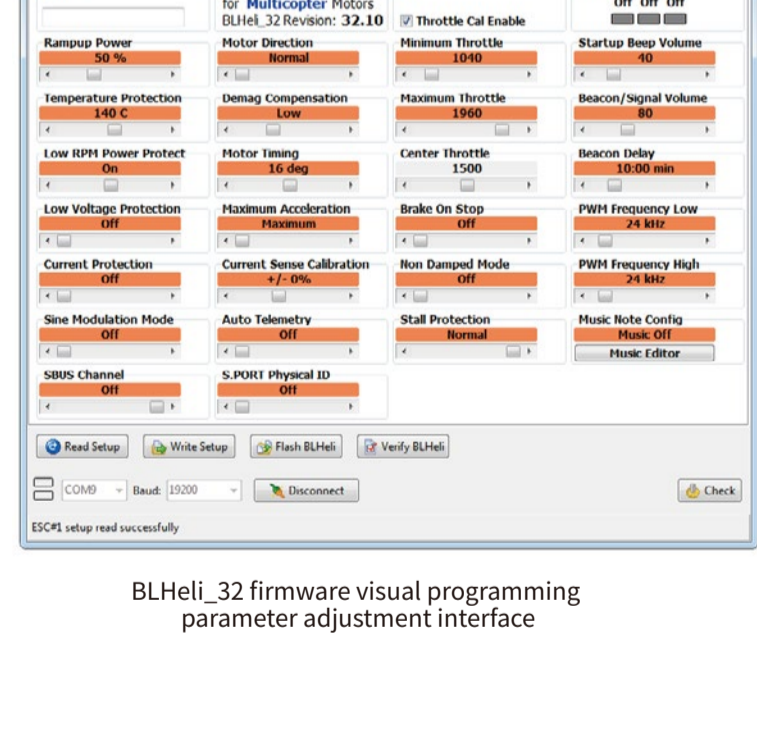
### 14130 Brushless ESC Manual



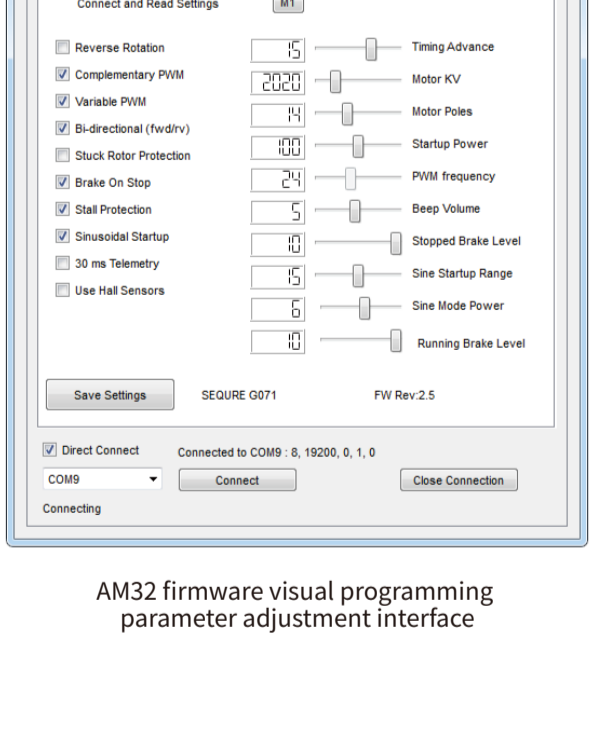
### 5. Wiring Diagram



### 6. Programming Parameters

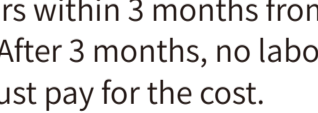


BLHeli\_32 firmware visual programming parameter adjustment interface



AM32 firmware visual programming parameter adjustment interface

### 14130 Brushless ESC Manual



### 7. Warranty Terms

- (1) For those performance faults caused by non-human factors within 3 months from the date of purchase, we provide repair & maintenance service for free. After 3 months, no labor fee will be charged for repairs. If you would like to replace parts, you must pay for the cost.
- (2) All man-made damage, faults caused by self disassembly & improper use, not covered by the warranty.

### 8. Safety Precautions

- Please do not flash unofficial firmware to avoid damage to the ESC.
- Please do not use it beyond the ESC operating voltage and current range.
- Please check and make sure the positive and negative polarity are correct before powering on.
- Please use the product in compliance with local regulations and ensuring safety.
- Please use accessories that meet safety standards and store them out of reach of children.



www.sequiremall.com  
info@sequiremall.com

### 14130 Brushless ESC Manual

